



Andy Beshear
GOVERNOR

TRANSPORTATION CABINET

200 Mero Street
Frankfort, Kentucky 40601

Jim Gray
SECRETARY

June 8, 2023

CALL NO. 200
CONTRACT ID NO. 231326
ADDENDUM # 1

Subject: Hopkins-Christian County, NHPP 0411(032)

Letting June 22, 2023

- (1) Revised - Proposal Sheets P. 112-115, 121-132 & 305 of 390
- (2) Revised - Material Summary P. 331-335 of 390
- (3) Revised - Proposal Bid Items P. 386-390 of 390

Proposal revisions are available at <http://transportation.ky.gov/Construction-Procurement/>.

If you have any questions, please contact us at 502-564-3500.

Sincerely,

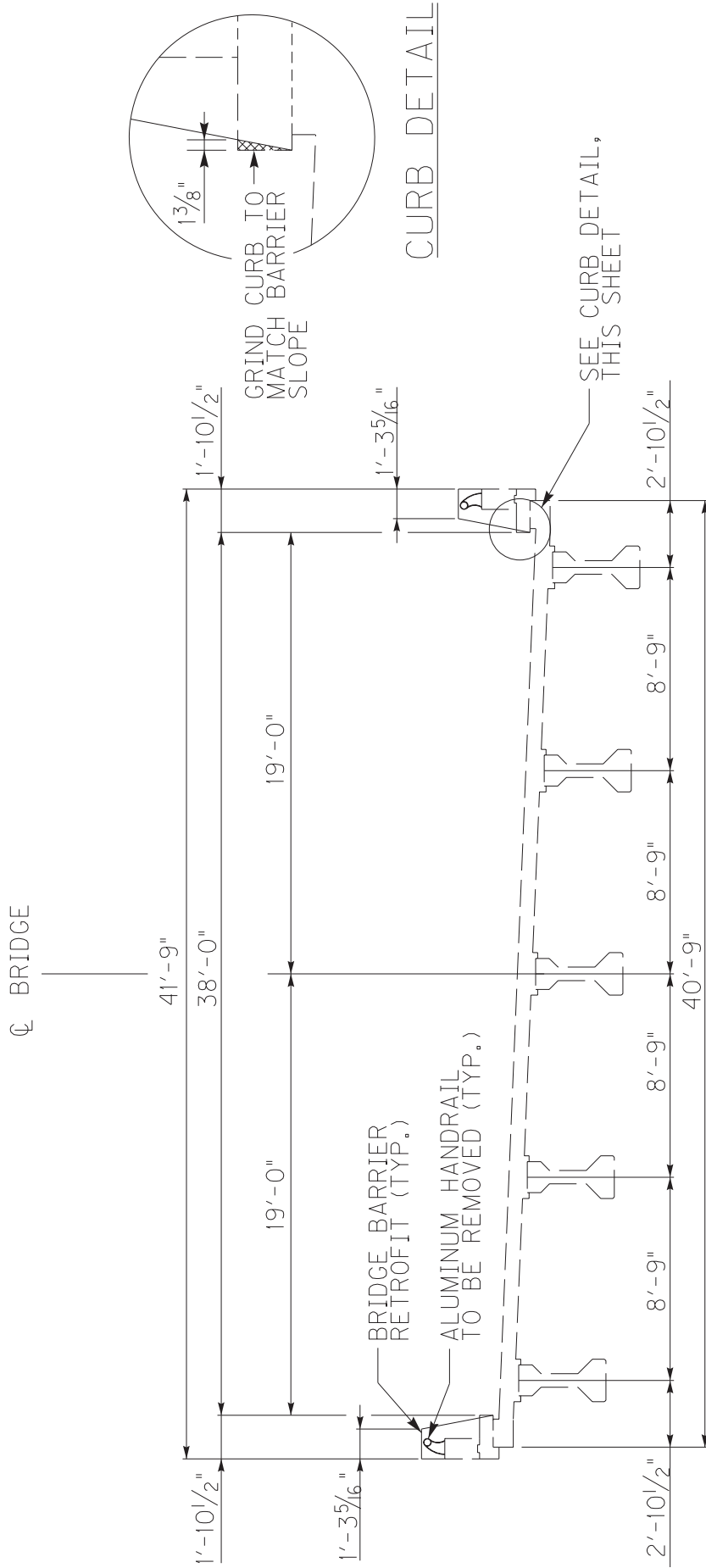
Rachel Mills,

A handwritten signature in black ink that reads "Rachel Mills".

Rachel Mills, P.E.
Director
Division of Construction Procurement

RM:so
Enclosures

County	Item No.	Sheet
HOPKINS	2-131	1



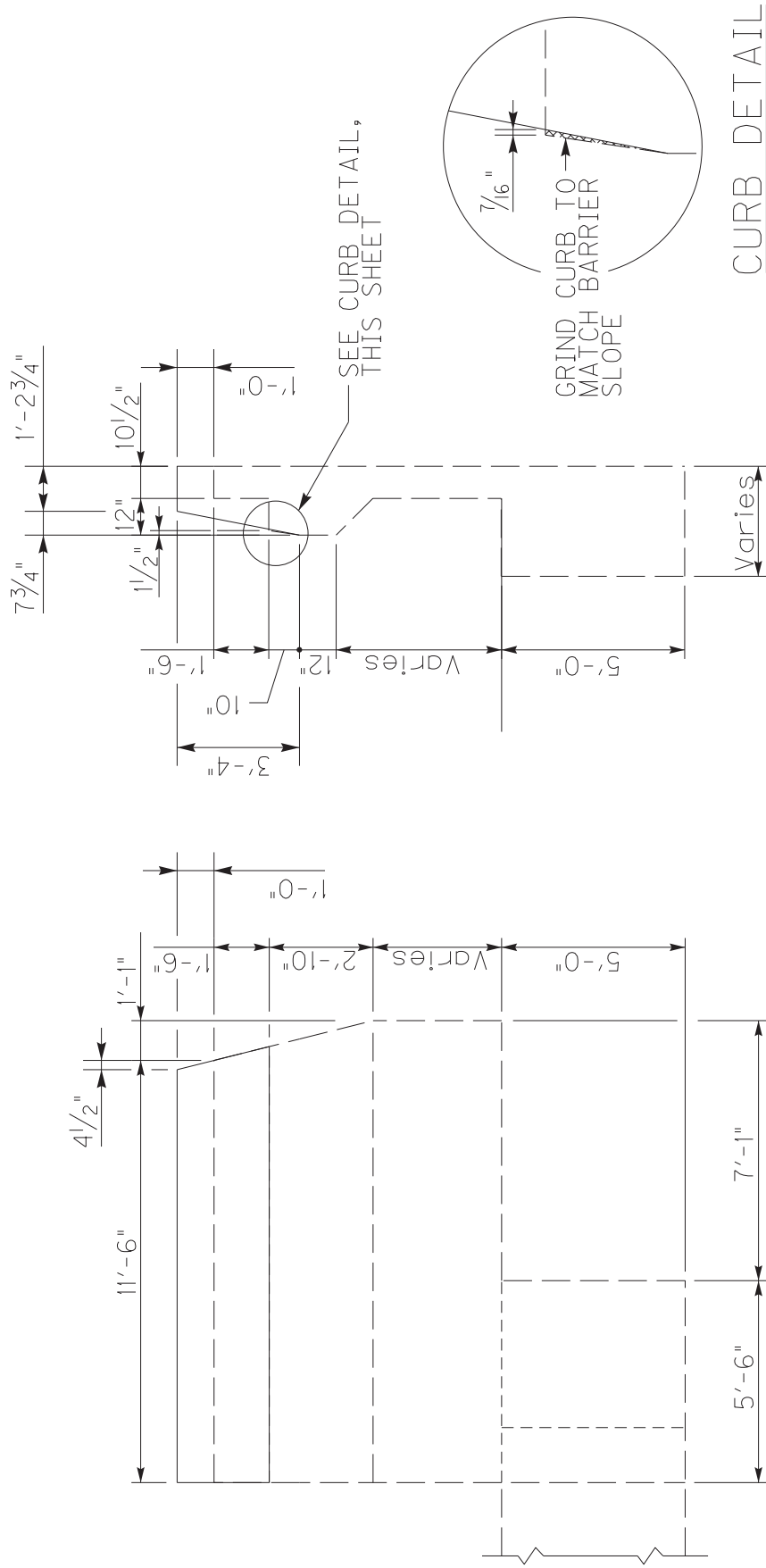
TYPICAL SECTION THRU DECK

I-169 OVER DRAKES CREEK
 BRIDGE BARRIER RETROFIT
 TYPICAL SECTION

County	Item No.	Sheet
HOPKINS	2-131	2

NOTE

BRIDGE BARRIER RETROFIT SECTION SHALL BE APPLIED TO WING BARRIERS AS WELL. EXISTING WINGS DO NOT HAVE THE 3" BLOCKOUT AT THE BASE OF THE CURB AS SEEN IN THE EXISTING BRIDGE RAIL SECTION. THE PROPOSED BARRIER SLOPE WILL EXTEND FROM 10" BELOW THE TOP OF EXISTING CURB.



TYPICAL WING ELEVATION

TYPICAL SECTION THRU WING

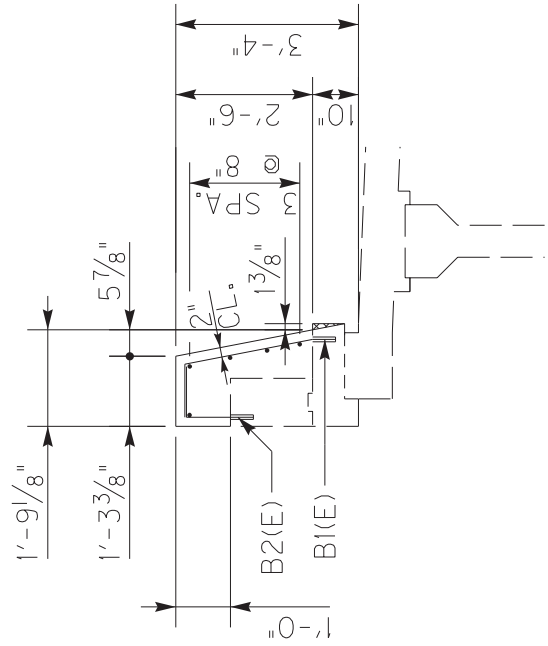
I-169 OVER DRAKES CREEK
BRIDGE BARRIER RETROFIT
DETAIL SHEET

County	Item No.	Sheet
HOPKINS	2-131	3

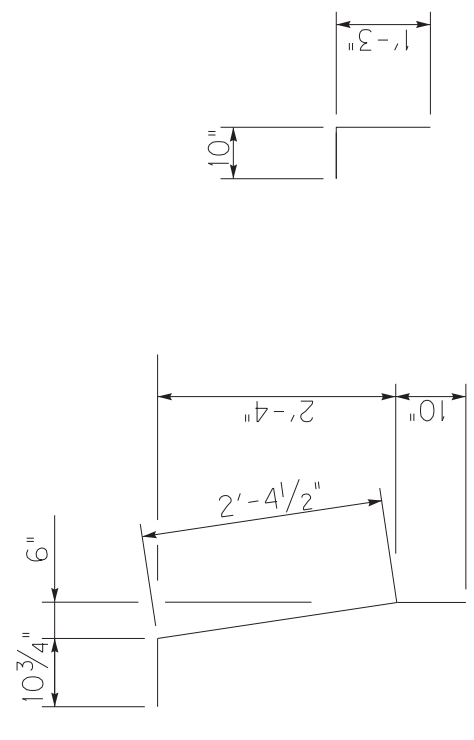
ESTIMATE OF QUANTITIES		
23550EC	23378EC	
23032EN	23378EC	
REMOVE RAIL	BRIDGE BARRIER RETROFIT	CONCRETE SEALING
LF	LF	SQFT
710.7	710.7	5810

NOTES

- DRILL AND EPOXY GROUT B1(E) BARS 10" INTO EXISTING CONCRETE.
- DRILL AND EPOXY GROUT B2(E) BARS 5" INTO EXISTING CONCRETE.
- LONGITUDINAL STEEL SHALL BE EPOXY COATED #4 REBAR WITH 2'-2" LAP SPLICE LENGTH, AS REQUIRED.
- VERTICAL BARS SHALL BE PLACED AT 12" MAX. SPACING.



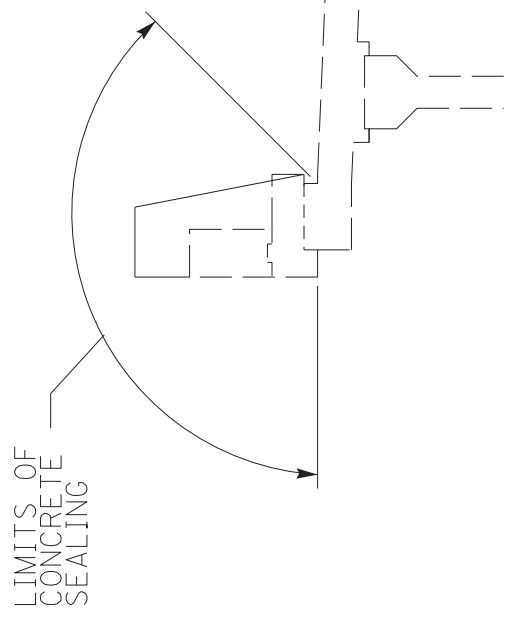
BARRIER RETROFIT SECTION



B1(E) BAR (#4)

B2(E) BAR (#4)

BAR TYPES



CONCRETE SEALING LIMITS

I-169 OVER DRAKES CREEK
BRIDGE BARRIER RETROFIT
DETAIL SHEET

County	Item No.	Sheet
HOPKINS	2-131	4

NOTES

FOR BONDING NEW CONCRETE TO EXISTING SURFACES & DOWELING INTO EXISTING CONCRETE, SEE SECTION 511 AND 826 OF THE STANDARD SPECIFICATIONS.

BARRIER CONCRETE SHALL BE CLASS "AA".

STEEL REINFORCEMENT SHALL BE IN ACCORDANCE WITH ASTM A615/A615M-96a, DEFORMED FOR CONCRETE REINFORCEMENT, GRADE 60 AND EPOXY COATED.

REINFORCEMENT LAP SPLICES SHALL BE 2'-2" LONG.

ATTACH GUARDRAIL CONNECTOR (TYPE A) TO BARRIER RETROFIT AT BRIDGE END IN GENERAL CONFORMITY TO STD DWG RBC-005-01 WITH ALL MODIFICATIONS APPROVED BY THE ENGINEER.

THE UNIT PRICE BID FOR BRIDGE BARRIER RETROFIT SHALL INCLUDE THE COST OF CONCRETE, REINFORCING STEEL, DRILLING AND GROUTING BARS INTO EXISTING CONCRETE, AND OTHER WORK ITEMS AS NECESSARY TO CONSTRUCT THE RAILING AS DEPICTED IN THESE PLANS.

I-169 OVER DRAKES CREEK
BRIDGE BARRIER RETROFIT
NOTES

TRANSPORTATION CABINET DEPARTMENT OF HIGHWAYS

HOPKINS COUNTY, I-169 (KY-900) over I.C.R.R. & PLEASANT RUN CREEK, ITEM 2-131.00


ESTIMATE OF QUANTITIES - NORTHBOUND STRUCTURE

BID ITEM CODE	08100	08104	08150	08151	08003	02231	08046	08033	08633	03299	25028ED	23378EC	02403	08020
BID ITEM	CONCRETE-CLASS A	CONCRETE-CLASS AA	STEEL REINFORCEMENT	STEEL REINFORCEMENT- EPOXY COATED	FOUNDATION PREPARATION	STRUCTURE GRANULAR BACKFILL	PILES-STEEL HP12X53	TEST PILES	PRECAST PCI BEAM TYPE 3	ARMORED EDGE FOR CONCRETE	RAIL SYSTEM SINGLE SLOPE 40 IN	CONCRETE SEALING	REMOVE CONCRETE MASONRY	CRUSHED AGGREGATE SLOPE PROT
UNIT	CUYD	CUYD	LB	LB	LS	CUYD	LF	LF	LF	LF	LF	SOFT	CUYD	TON
END BENT #1	14.8		790			188	172	53				88		34.9
PIER #1	33.3		5641			630	630	80				872		
PIER #2	33.3		5641			630	630	80				872		
PIER #3	36.5		6127			630	630	80				872		
PIER #4	36.5		6096			630	630	80				872		
END BENT #2	14.8		790			188	172	53				88		34.9
SUBSTRUCTURE														
SUPERSTRUCTURE		156.8	29793	29793					541.3	32.0	275	8718	71.3	
BRIDGE TOTALS	169.2	156.8	25086	29793	1	375	2864	426	541.3	32.0	275	12382	71.3	69.8

ESTIMATE OF QUANTITIES - SOUTHBOUND STRUCTURE

BID ITEM CODE	08100	08104	08150	08151	08003	02231	08046	08033	08633	03299	25028ED	23378EC	02403	08020
BID ITEM	CONCRETE-CLASS A	CONCRETE-CLASS AA	STEEL REINFORCEMENT	STEEL REINFORCEMENT- EPOXY COATED	FOUNDATION PREPARATION	STRUCTURE GRANULAR BACKFILL	PILES-STEEL HP12X53	TEST PILES	PRECAST PCI BEAM TYPE 3	ARMORED EDGE FOR CONCRETE	RAIL SYSTEM SINGLE SLOPE 40 IN	CONCRETE SEALING	REMOVE CONCRETE MASONRY	CRUSHED AGGREGATE SLOPE PROT
UNIT	CUYD	CUYD	LB	LB	LS	CUYD	LF	LF	LF	LF	LF	SOFT	CUYD	TON
END BENT #1	14.8		790			188	172	53				88		34.9
PIER #1	33.3		5641			630	630	80				872		
PIER #2	33.3		5641			630	630	80				872		
PIER #3	36.5		6127			630	630	80				872		
PIER #4	36.5		6096			630	630	80				872		
END BENT #2	14.8		790			188	172	53				88		34.9
SUBSTRUCTURE														
SUPERSTRUCTURE		156.8	29793	29793					541.3	32.0	275	8718	71.3	
BRIDGE TOTALS	169.2	156.8	25086	29793	1	375	2864	426	541.3	32.0	275	12382	71.3	69.8
PROJECT TOTALS	338.4	313.6	50172	59586	1	750	5728	852	1082.6	64.0	550	24764	142.6	139.6

PLANS PREPARED BY:



Bryan C. Reid, PE
KY No. 27998

INDEX OF SHEETS

Sheet No.	Description
S1	Title Sheet & Quantities
S2	General Notes
S3	Layout
S4	Typical Sections
S5-S6	Foundation Layout
S7-S8	End Bent Details
S9	Pier Details
S10	Framing Plan
S11	PPC-Beam Type III Details
S12	Superstructure

SPECIAL NOTES

Special Note for Concrete Sealing

SPECIAL PROVISIONS

69 Embankment at Bridge End Bent Structures

STANDARD DRAWINGS

BR2401-12	Electronic Bearing Pads for Prestressed Beams
BR2402-14	Bearing Pad
BR2401-12	Electronic Bearing Pads for Prestressed Beams
BR2408-10	Stirrups for Structures
BR2412-02	Geotechnical Legend
BR2415-04	Bridge Details
BR2422	Joint Waterproofing
BR2410	Rolling System 40 In. Single Slope
BR2414	Thin-Beam Girder Transition (L-3)
BR2403-08	HP12x53 Steel Pile

SPECIFICATIONS

2019 Standard Specifications for Road and Bridge Construction
AASHTO LRFD Bridge Design Specifications, 9th Edition, 2020

COMMONWEALTH OF KENTUCKY DEPARTMENT OF HIGHWAYS	REVISION	DATE	DATE PLOTTED	SHEET	TOTAL SHEETS	FILE SPECS
HMB PROFESSIONAL ENGINEERS, INC.	PREPARED BY	B. R. H. H.	DESIGNED BY	B. R. H. H.	CHECKED BY	L. B. H. H.
COUNTY OF HOPKINS	ROUTE	I-169	ITEM NO.	2-131.00	SHEET NO.	SI
CONTRACT #1	TITLE SHEET & QUANTITIES	I.C.R.R. & PLEASANT RUN CREEK		DATE	5/20/23	

GENERAL NOTES

SLOPE PROTECTION

SLOPE PROTECTION SHALL BE CRUSHED AGGREGATE SLOPE PROTECTION IN ACCORDANCE WITH SECTION 605.13 OF THE SPECIFICATIONS. GEOTEXTILE FABRIC UNDER THE SLOPE PROTECTION SHALL BE CONSIDERED INCIDENTAL TO THE UNIT PRICE BID FOR CRUSHED AGGREGATE SLOPE PROTECTION.

REINFORCEMENT

DIMENSIONS SHOWN FROM THE FACE OF CONCRETE TO BARS ARE TO CENTER OF BARS UNLESS OTHERWISE NOTED. THE CLEAR DISTANCE TO FACE OF CONCRETE IS 2" UNLESS OTHERWISE NOTED. ANY REINFORCING BARS DESIGNATED BY THE SUFFIX (E) IN THE PLANS SHALL BE EPOXY COATED IN ACCORDANCE WITH SECTION 81.10 OF THE STANDARD SPECIFICATIONS. ANY REINFORCING BARS DESIGNATED BY THE SUFFIX (S) IN THE BENDING DIAGRAM SHALL BE CONSIDERED A STIRRUP FOR PURPOSES OF BEND DIAMETERS.

CONTRACTOR VERIFY DIMENSIONS

CONTRACTOR SHALL VERIFY DIMENSIONS AND ELEVATIONS SHOWN IN THE PLANS BEFORE AND DURING CONSTRUCTION AND ADJUST BAR LENGTHS AND OR BEAM LENGTHS TO ENSURE PROPER FIT AND FINISH IN THE FINAL PRODUCT. DIMENSIONS ARE FOR A NORMAL TEMPERATURE OF 60 DEGREES FAHRENHEIT. LAYOUT DIMENSIONS ARE HORIZONTAL DIMENSIONS.

BEVELED EDGES

ALL BEVELED EDGES SHALL BE BEVELED 3/4 UNLESS OTHERWISE NOTED.

COMPLETION OF THE STRUCTURE

THE CONTRACTOR IS REQUIRED TO COMPLETE THE STRUCTURE IN ACCORDANCE WITH THE PLANS AND SPECIFICATIONS. MATERIAL, LABOR OR CONSTRUCTION OPERATIONS, NOT OTHERWISE SPECIFIED, ARE TO BE INCLUDED IN THE BID ITEM MOST APPROPRIATE TO THE WORK INVOLVED. THIS MAY INCLUDE COFFERDAMS, SHORING, EXCAVATIONS, BACKFILLING, REMOVAL OF ALL OR PARTS OF EXISTING STRUCTURE, INCIDENTAL MATERIALS, LABOR, OR ANYTHING ELSE REQUIRED TO COMPLETE THE STRUCTURE.

BEFORE YOU DIG

THE CONTRACTOR SHALL BE RESPONSIBLE FOR ALL REQUIREMENTS AND CONFORMANCE WITH THE UNDERGROUND FACILITY DAMAGE PREVENTION ACT OF 1994. THE CONTRACTOR WILL BE RESPONSIBLE FOR LOCATING ANY UTILITIES ON THIS PROJECT. ALL UNDERGROUND UTILITIES SHALL BE LOCATED AND MARKED PRIOR TO EXCAVATION. THE CONTRACTOR SHALL BE RESPONSIBLE FOR OBTAINING ALL NECESSARILY ALL UNDERGROUND UTILITIES.

STAY-IN-PLACE METAL FORMS

THE USE OF STAY-IN-PLACE FORMWORK FOR THE BRIDGE DECK IS PERMITTED PROVIDED THE CORRUGATIONS ARE FILLED WITH EXPANDED POLYSTYRENE.

EXISTING REINFORCING STEEL

THE COST OF CUTTING, BENDING AND CLEANING EXISTING REINFORCING STEEL IS TO BE INCIDENTAL TO THE LUMP-SUM BID FOR REMOVE CONCRETE MASONRY.

FOUNDATION PREPARATION

INCLUDE IN THIS LUMP SUM BID THE COST OF ANY REQUIRED COMMON EXCAVATION INCLUDING MATERIALS, LABOR, EQUIPMENT, ETC., IN ACCORDANCE WITH SECTION 603 OF THE SPECIFICATIONS. CONTRARY TO THE SPECIFICATIONS, BACKFILLING BEHIND THE ABUTMENTS SHALL BE PAID FOR IN THE UNIT PRICE BID FOR STRUCTURE GRANULAR BACKFILL.

CONCRETE SEALER

SUPERSTRUCTURE AREAS DETAILED IN THE SPECIFICATIONS AS REQUIRING MASONRY COATING SHALL BE SEALED IN ACCORDANCE WITH THE SPECIAL NOTE FOR CONCRETE SEALING AND IN THE AREAS SHOWN IN THE DETAIL ON S4. CONCRETE SURFACES (EXCEPT THE DECK) SHALL RECEIVE THE ORDINARY SURFACE FINISH AS DESCRIBED IN SECTION 601.03.18(A) PRIOR TO BEING SEALED.

SPECIFICATIONS

ALL REFERENCES TO THE STANDARD SPECIFICATIONS ARE TO THE 2019 EDITION OF THE KENTUCKY DEPARTMENT OF HIGHWAYS STANDARD SPECIFICATIONS FOR ROAD AND BRIDGE CONSTRUCTION WITH CURRENT SUPPLEMENTAL SPECIFICATIONS. ALL REFERENCES TO THE AASHTO SPECIFICATIONS ARE TO THE 9TH EDITION OF THE AASHTO LRFD BRIDGE DESIGN SPECIFICATIONS WITH INTERIMS.

DESIGN LOAD

THIS BRIDGE IS DESIGNED FOR A MODIFIED HL-93 (KY HL-93) LIVE LOAD OBTAINED BY INCREASING THE AASHTO LOADING BY 25%. SEE EXISTING PLANS FOR THE DESIGN LOAD USED FOR THE SUBSTRUCTURE THAT WILL REMAIN IN-PLACE.

FUTURE WEARING SURFACE

THIS BRIDGE IS DESIGNED FOR A 15 PSF FUTURE WEARING SURFACE LOAD.

DESIGN METHOD

ALL REINFORCED CONCRETE MEMBERS ARE DESIGNED BY THE LOAD AND RESISTANCE FACTOR METHOD AS SPECIFIED IN THE CURRENT AASHTO SPECIFICATIONS. SEE EXISTING PLANS FOR THE DESIGN METHOD USED FOR THE SUBSTRUCTURE PORTIONS THAT WILL REMAIN IN-PLACE.

MATERIALS DESIGN SPECIFICATIONS

- F_c = 3500 PSI FOR CLASS 'A' REINFORCED CONCRETE
- F_c = 4000 PSI FOR CLASS 'AA' REINFORCED CONCRETE
- F_y = 60000 PSI FOR STEEL REINFORCEMENT

FOR PRESTRESSED BEAM MATERIAL SPECIFICATIONS, SEE BEAM SHEET.

MATERIAL SPECIFICATIONS

ASTM OR AASHTO SPECIFICATIONS, CURRENT EDITION, AS DESIGNATED BELOW SHALL GOVERN THE MATERIALS FURNISHED.

- ASTM M-270, GRADE 36
- AASHTO M-203, GRADE 270
- ASTM A615/A615M-96g
- ASTM A615/A615M-96g

CONCRETE

CLASS 'AA' CONCRETE IS TO BE USED IN THE SUPERSTRUCTURE. CLASS 'A' CONCRETE IS TO BE USED IN THE SUBSTRUCTURE. PRESTRESSED BEAM CONCRETE SHALL BE IN ACCORDANCE WITH THE PLANS AND SPECIFICATIONS.

STRUCTURE GRANULAR BACKFILL

EXCAVATION INTO EXISTING PAVEMENT OR GROUND BEHIND THE ABUTMENTS THAT MAY BE REQUIRED FOR ABUTMENT CONSTRUCTION SHALL BE BACKFILLED WITH STRUCTURE GRANULAR BACKFILL IN ACCORDANCE WITH SPECIAL PROVISION 603. WRAP ALL ROCK IN GEOTEXTILE FABRIC. STRUCTURE GRANULAR BACKFILL SHALL BE INCIDENTAL TO THE UNIT PRICE BID FOR STRUCTURE GRANULAR BACKFILL.

ON-SITE INSPECTION

EACH CONTRACTOR SUBMITTING A BID FOR THIS WORK SHALL MAKE A THOROUGH INSPECTION OF THE PROJECT SITE PRIOR TO SUBMITTING A BID AND SHALL BE THOROUGHLY FAMILIARIZED WITH EXISTING CONDITIONS SO THAT WORK CAN BE EXPEDITIOUSLY PERFORMED AFTER A CONTRACT IS AWARDED. SUBMISSION OF A BID WILL BE CONSIDERED EVIDENCE OF THIS INSPECTION HAVING BEEN MADE. ANY CLAIMS RESULTING FROM SITE CONDITIONS WILL NOT BE HONORED BY THE DEPARTMENT OF HIGHWAYS.

DAMAGE TO THE STRUCTURE

THE CONTRACTOR IS RESPONSIBLE FOR ANY AND ALL DAMAGES TO THE EXISTING STRUCTURE DURING RECONSTRUCTION EVEN TO THE REPLACEMENT OF THE ENTIRE STRUCTURE. SHOULD THEY BE DAMAGED DUE TO CONTRACTOR'S ACTIONS.

PILING

PILING SHALL BE DRIVEN TO PRACTICAL REFUSAL. TEST PILES SHALL BE DRIVEN WHERE NECESSARY TO DETERMINE THE CAPACITY OF PILES TO BE USED IN THE FINISHED STRUCTURE. PILES SHALL BE ACCURATELY LOCATED SO THAT THEY MAY BE USED IN THE FINISHED STRUCTURE.

PILE POINTS

PILE POINTS ARE REQUIRED. THE POINTS SHALL BE THE TYPE FOR KEYING INTO A SLOPING ROCK SURFACE. SEE SECTION 604.03.04(C) OF THE STANDARD SPECIFICATIONS.

TEMPORARY SUPPORTS

TEMPORARY SUPPORTS OR SHORING WILL NOT BE PERMITTED UNDER THE BEAMS WHEN POURING THE CONCRETE DECK SLAB OR WHEN TAKING TOP OF BEAM ELEVATIONS.

STRUCTURE EXCAVATION

SHEETING OR SHORING MAY BE NECESSARY FOR CONSTRUCTION. THE COST OF ANY SUCH WORK SHALL BE INCLUDED IN THE UNIT PRICE BID FOR FOUNDATION PREPARATION OR REMOVE CONCRETE MASONRY, AS APPROPRIATE.

CONSTRUCTION IDENTIFICATION

THE NAMES OF THE PRIME CONTRACTOR AND THE SUBCONTRACTOR SHALL BE IMPRINTED IN THE CONCRETE WITH ONE INCH LETTERS AT A LOCATION DESIGNATED BY THE ENGINEER. THE CONTRACTOR SHALL FURNISH ALL PLANS, EQUIPMENT AND LABOR NECESSARY TO DO THE WORK FOR WHICH NO DIRECT PAYMENT WILL BE MADE. SEE STD. DWG. BOX-006, C.E.

DISCLAIMER

ACCEPTANCE OF ANY CONTRACTOR'S SUBMISSION REQUIRED ON THIS PROJECT DOES NOT CONSTITUTE AN ENDORSEMENT OF THE CONTRACTOR'S WORK. THE CONTRACTOR SHALL BE RESPONSIBLE FOR THE WORK PERFORMED AND AUTHORIZATION FOR THE CONTRACTOR TO PROCEED. THE DEPARTMENT IS NOT BOUND BY ACCEPTANCE OF ANY SUBMISSIONS REQUIRED. FINAL ACCEPTANCE OR APPROVAL WILL BE CONTINGENT ON THE SATISFACTORY COMPLETION OF THE PROJECT.

SHOP DRAWINGS

WHEN CHANGES IN THE SHOP DRAWINGS ARE PROPOSED BY THE FABRICATOR OR SUPPLIER, THE CONTRACTOR SHALL SUBMIT SHOP DRAWINGS TO THE CONSULTANT FOR REVIEW AND THROUGH THE CONTRACTOR THE CONSULTANT SHALL PROVIDE THE DIVISION OF STRUCTURAL DESIGN ONE COPY OF THE FINAL APPROVED SHOP PLANS.

SLAB POURING SEQUENCE

SLAB SHALL BE POURED CONTINUOUSLY OUT TO OUT.

EXISTING PLANS

EXISTING PLANS CAN BE FOUND UNDER DRAWING NUMBERS 14007 AND 25893.

BONDED CONSTRUCTION JOINT

WHERE A BONDED CONSTRUCTION JOINT IS CALLED FOR IN THE PLANS, BOND NEW PLASTIC CONCRETE TO HARDENED CONCRETE USING A TYPE V EPOXY RESIN OR OTHER APPROVED STRUCTURAL ADHESIVE AS PRESCRIBED IN SECTION 826 OF THE SPECIFICATIONS. FOLLOW THE MANUFACTURER'S RECOMMENDED APPLICATION INSTRUCTIONS. THIS WORK AND MATERIAL IS INCIDENTAL TO THE UNIT PRICE BIDS FOR CLASS 'A' OR CLASS 'AA' CONCRETE.

DRILLING AND GROUTING


IN ACCORDANCE WITH SECTION 826 OF THE SPECIFICATIONS, DRILL HOLES TO A DEPTH AS SHOWN IN THE PLANS. DRILL HOLES SHALL BE APPLIED TO TYPE V EPOXY BONDING ADHESIVE IN THE HOLES. ALSO, APPLY A TYPE V EPOXY BONDING MATERIAL TO THE INTERFACE BETWEEN THE EXISTING CONCRETE AND THE NEW CONCRETE PRIOR TO PLACING THE NEW CONCRETE. ALL COSTS ASSOCIATED WITH THIS WORK SHALL BE INCIDENTAL TO THE UNIT PRICE BID FOR CLASS 'A' OR CLASS 'AA' CONCRETE.

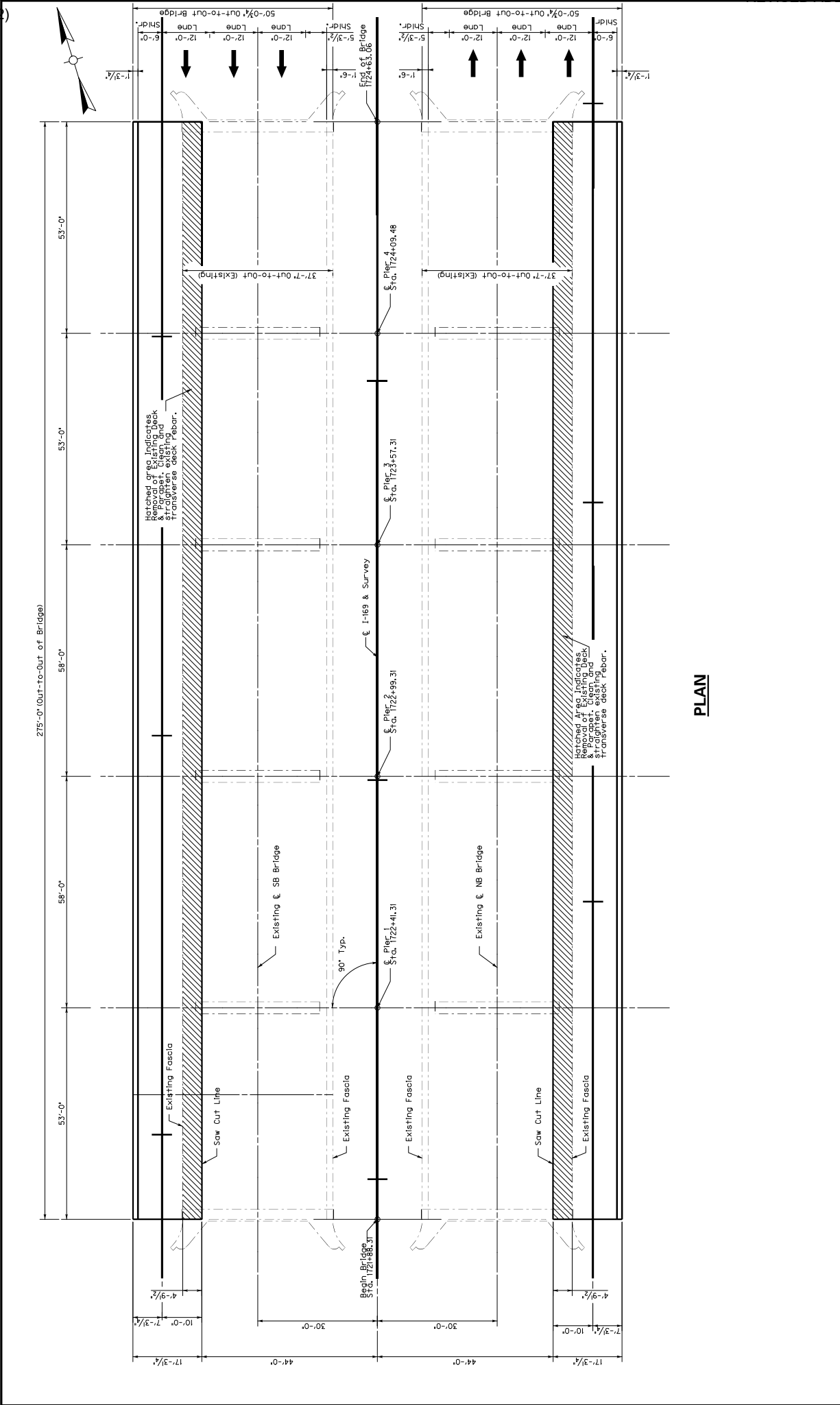
REMOVE CONCRETE MASONRY

THE CONTRACTOR SHALL USE HAND HELD JACK HAMMERS OR HYDRO-DEMOLITION TECHNIQUES TO REMOVE CONCRETE WITHOUT DAMAGING THE EXISTING REINFORCEMENT THAT IS TO REMAIN IN PLACE. ANY CONCRETE REMOVAL OUTSIDE THE DETAILED LIMITS SHALL BE REPLACED AT THE CONTRACTOR'S EXPENSE. THE CONTRACTOR SHALL MAKE A RECORD OF ALL REMOVALS AND THE COSTS OF THIS WORK SHALL BE INCLUDED IN THE UNIT PRICE BID FOR REMOVE CONCRETE MASONRY.

BONDING NEW CONCRETE TO OLD CONCRETE

ALL NEW CONCRETE SHALL BE BONDED TO THE OLD CONCRETE WITH A TYPE V EPOXY RESIN SYSTEM CONFORMING TO SECTION 51.1 AND 826 OF THE SPECIFICATIONS. THE COSTS OF THIS WORK SHALL BE INCIDENTAL TO THE UNIT PRICE BIDS FOR CLASS 'A' OR CLASS 'AA' CONCRETE.

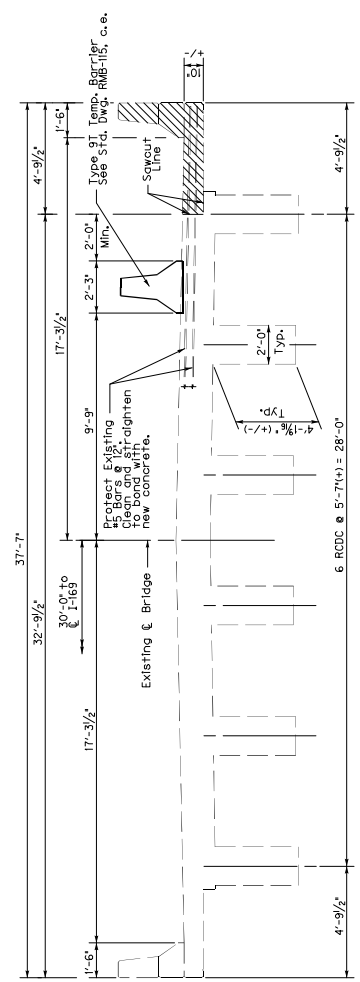
	COMMONWEALTH OF KENTUCKY DEPARTMENT OF HIGHWAYS	USER: 30585	DATE PLOTTED: 5/24/23	SHEET NO. 28/63	COUNTY OF HOPKINS
	HMB PROFESSIONAL ENGINEERS, INC.	DATE: 5/2/23	CHECKED BY: L. Bahr	SHEET NO. 52	ROUTE I-169
REVISION	DATE	DESIGNED BY: B. Ruff	L. Bahr	GENERAL NOTES	
DATE PLOTTED: 5/24/23	SHEET NO. 28/63	FILE SPECS	I.C.R.R. & PLEASANT RUN CREEK		



PLAN

 COMMONWEALTH OF KENTUCKY DEPARTMENT OF HIGHWAYS	USER: S0585	DATE PLOTTED: 5/20/23	DATE:	PREPARED BY: HMB HMB PROFESSIONAL ENGINEERS, INC.	CHECKED BY: L. Baker E. Baker	ROUTE: I-169	ITEM NO.: 2-131.00	COUNTY OF: HOPKINS
	MICROSTATION V8.11.2018	FILE: SFILES	DESIGNED BY: B. BANI DETAIL BY: B. BANI	DATE: 5/2/23	CROSSING: I.C.R.R. & PLEASANT RUN CREEK	SHEET NO.: SS	SHEET NO.: SS	DRAWING NO.: 287830

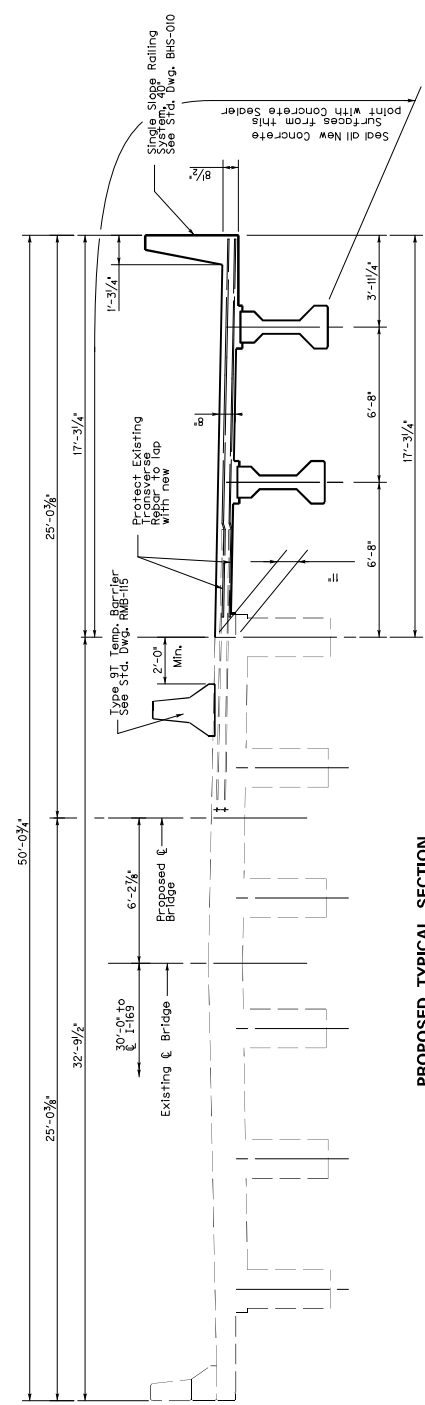
REMOVAL



Notes: areas indicates removal of existing concrete masonry.

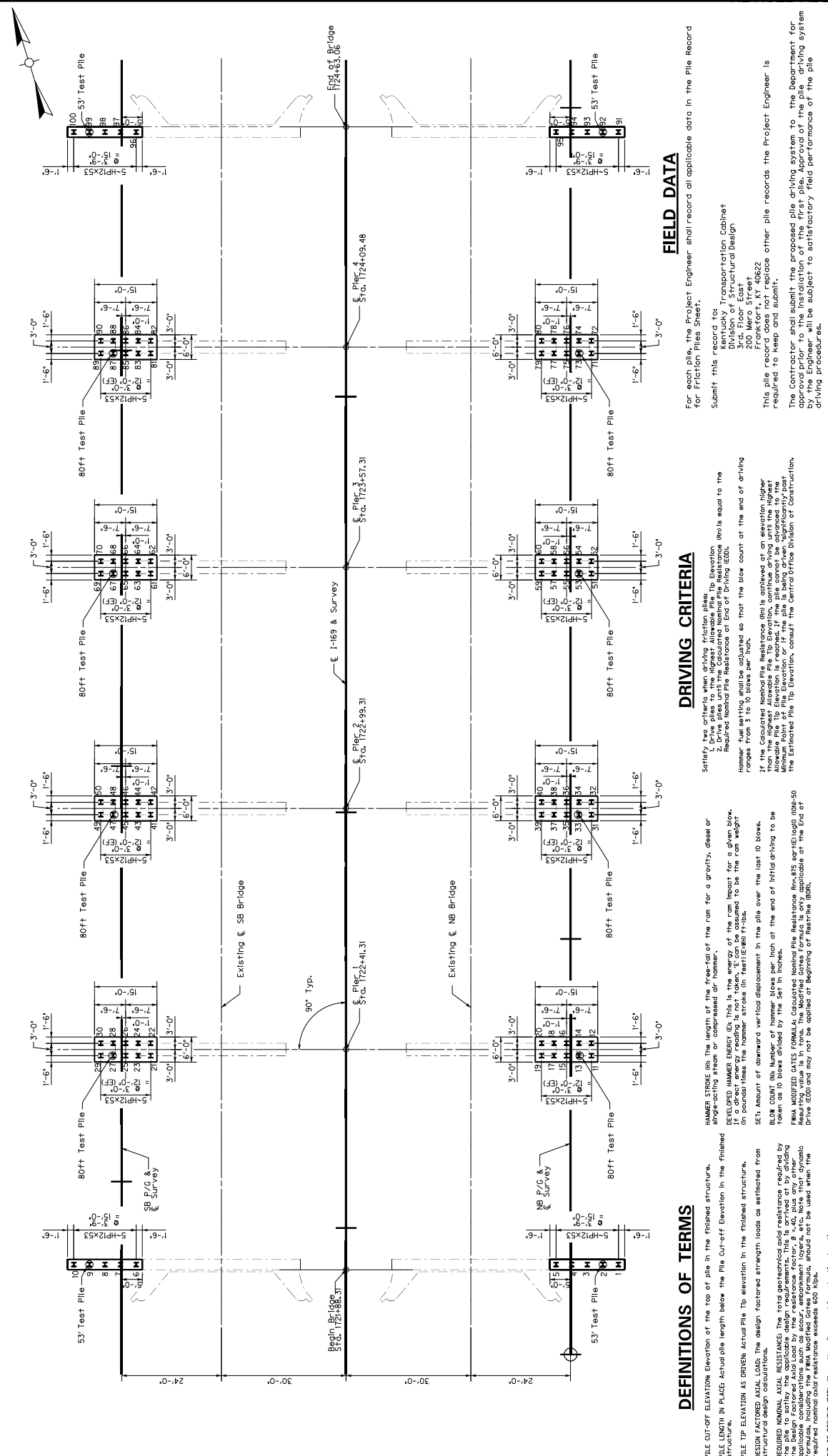
EXISTING TYPICAL SECTION
 (LOOKING AHEAD)

CONSTRUCTION



PROPOSED TYPICAL SECTION
 (LOOKING AHEAD)

	REVISION DATE DATE PLOTTED: 3/07/23 USER: SJS/BS		PREPARED BY: B. RAB DESIGNED BY: B. RAB CHECKED BY: L. BAKER FILE: SJS/BS	TYPICAL SECTIONS CROSSING I.C.R.R. & PLEASANT RUN CREEK	ROUTE I-169	ITEM NO. 2-131.00 SHEET NO. 54	COUNTY OF HOPKINS DRAWING NO. 28/030
	COMMONWEALTH OF KENTUCKY DEPARTMENT OF HIGHWAYS		DATE: 5/2023 HMB PROFESSIONAL ENGINEERS, INC.	I.C.R.R. & PLEASANT RUN CREEK	ROUTE I-169	ITEM NO. 2-131.00 SHEET NO. 54	COUNTY OF HOPKINS DRAWING NO. 28/030



FIELD DATA

For each pile, the Project Engineer shall record all applicable data in the Pile Record for Friction Piles Sheet.
Submit this record to:
Kentucky Transportation Cabinet
Division of Structural Design
200 Marco Street
Frankfort, KY 40622
This pile record does not replace other pile records the Project Engineer is required to keep and submit.
The Contractor shall submit the proposed pile driving system to the Department for approval prior to the installation of the first pile. Approval of the pile driving system will be subject to satisfactory field performance of the pile driving procedures.
Use HP 12x53 Piles.

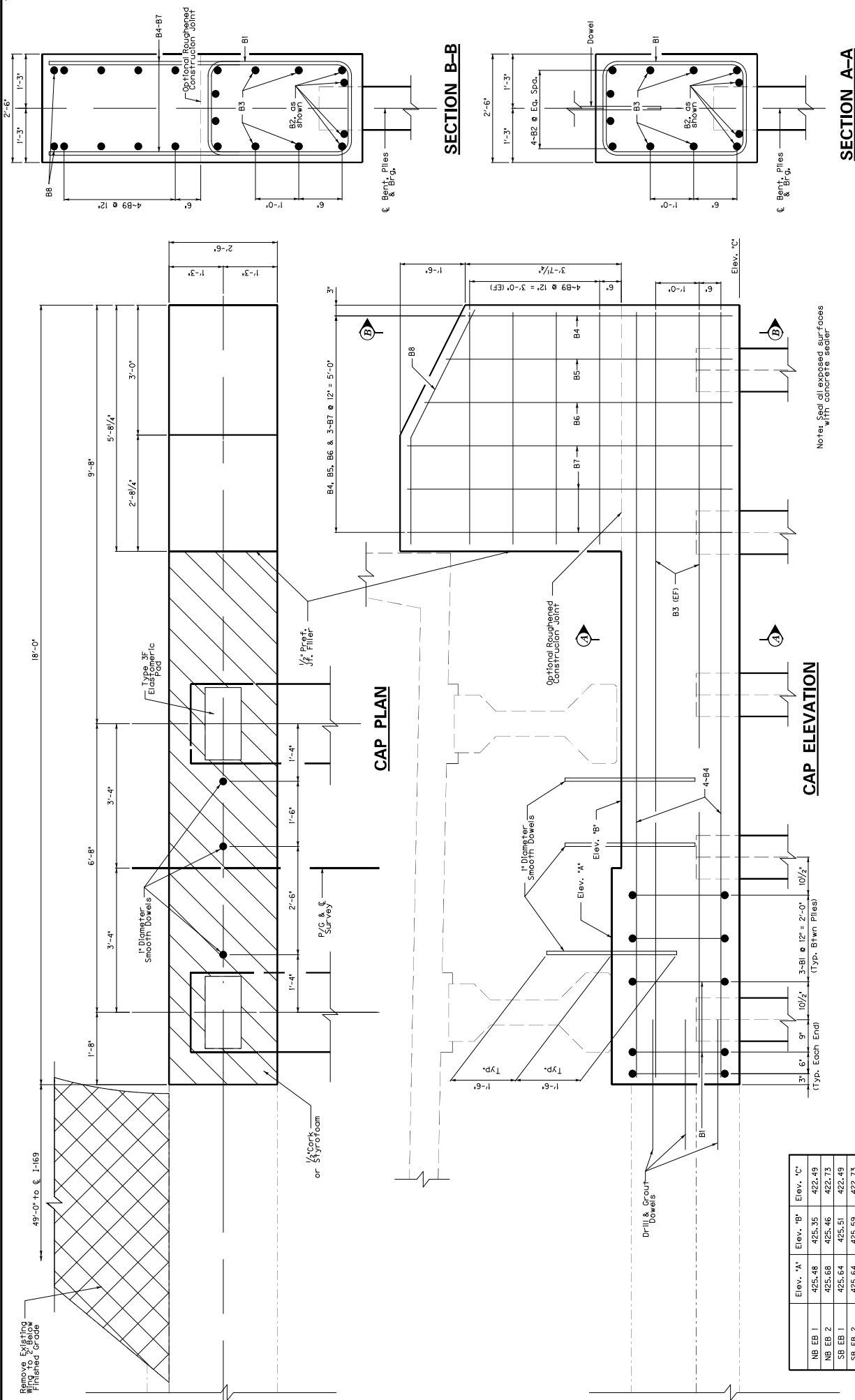
DRIVING CRITERIA

Satisfy the criteria when driving friction piles.
1. Drive piles to the highest Allowable Pile Tip Elevation.
2. Required Nominal Pile Resistance at End of Driving (EOD) ranges from 3 to 6 kips per inch.
3. If the Calculated Nominal Pile Resistance (Rn) is achieved at an elevation higher than the highest Allowable Pile Tip Elevation, continue driving until the highest Allowable Pile Tip Elevation is reached. The pile is to be installed to that elevation.
4. If the Calculated Nominal Pile Resistance (Rn) is not achieved at the highest Allowable Pile Tip Elevation, consult the Central Office Division of Construction, the Estimated Pile Tip Elevation, and the Central Office Division of Construction, for further instructions.
5. If the Estimated Pile Tip Elevation is not achieved, consult the Central Office Division of Construction, for further instructions.

DEFINITIONS OF TERMS

FILE CUT-OFF ELEVATION: Elevation of the top of pile in the finished structure.
FILE LENGTH IN PLACE: Actual pile length below the File Cut-off Elevation in the finished structure.
FILE TIP ELEVATION AS DRIVEN: Actual Pile Tip elevation in the finished structure.
DESIGN FACTORED AXIAL LOAD: The design factored strength loads as estimated from structural design calculations.
REQUIRED NOMINAL AXIAL RESISTANCE: The total geotechnical axial resistance required by the design factored axial load by the resistance factor, $\phi = 0.6$, plus any other applicable considerations such as scour, settlement, etc. Note that dynamic resistance is not to be used when the required nominal axial resistance exceeds 600 kips.
END OF DRIVING (EOD): When the pile was driven to Tip elevation.

	COUNTY OF HOPKINS	SHEET NO. 2-131.00	SHEET NO. SS	COUNTY OF HOPKINS
	DIVISION OF STRUCTURAL DESIGN	DATE 5/20/23	CHECKED BY L. Baker	ROUTE I-169
PREPARED BY HMB PROFESSIONAL ENGINEERS, INC.	DATE 5/20/23	DESIGNED BY B. Balf	CHECKED BY L. Baker	FOUNDATION LAYOUT (1 of 2)
DATE PLOTTED: 5/20/23	DATE PLOTTED: 5/20/23	DATE PLOTTED: 5/20/23	DATE PLOTTED: 5/20/23	I.C.R.R. & PLEASANT RUN CREEK
USER: S30585	USER: S30585	USER: S30585	USER: S30585	I.C.R.R. & PLEASANT RUN CREEK



COUNTY OF HOPKINS		DATE: 5/2023	DATE PLOTTED: 5/2023	DATE: 5/2023	DATE: 5/2023
ITEM NO. 2-131.00		DESIGNED BY: B. BAI	FILE: SPLES	PREPARED BY: HMB PROFESSIONAL ENGINEERS, INC.	REVISION
SHEET NO. S7		CHECKED BY: L. BAI	STAGES	ENGINEERS, INC.	REVISION
ROUTE I-169		DESIGNED BY: B. BAI	STAGES	ENGINEERS, INC.	REVISION
PROJECT CROSSING I.C.R.R. & PLEASANT RUN CREEK		DETAILS BY: B. BAI	STAGES	ENGINEERS, INC.	REVISION
PROJECT ENDS BENTS (1 of 2)		FILE: SPLES	STAGES	ENGINEERS, INC.	REVISION
PROJECT I.C.R.R. & PLEASANT RUN CREEK		FILE: SPLES	STAGES	ENGINEERS, INC.	REVISION
PROJECT I.C.R.R. & PLEASANT RUN CREEK		FILE: SPLES	STAGES	ENGINEERS, INC.	REVISION

REVISION	DATE	BY	DESCRIPTION

Elev. 'A'	Elev. 'B'	Elev. 'C'
NB EB 1	425.48	425.35
NB EB 2	425.68	425.46
SB EB 1	425.64	425.51
SB EB 2	425.64	425.59

COMMONWEALTH OF KENTUCKY
DEPARTMENT OF HIGHWAYS

USER: S3058

REVISION

DATE

DATE PLOTTED: 5/2023

STAGES

FILE: SPLES

PREPARED BY: HMB PROFESSIONAL ENGINEERS, INC.

ENGINEERS, INC.

DESIGNED BY: B. BAI

CHECKED BY: L. BAI

DATE: 5/2023

PROJECT ENDS BENTS (1 of 2)

PROJECT I.C.R.R. & PLEASANT RUN CREEK

ROUTE I-169

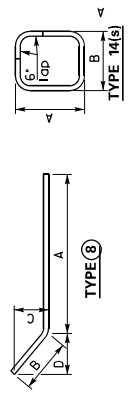
ITEM NO. 2-131.00

SHEET NO. S7

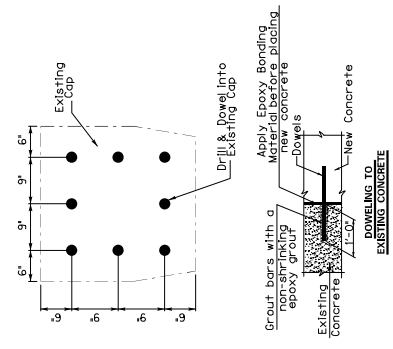
COUNTY OF HOPKINS

END BENTS BILL OF REINFORCEMENT



MARK	TYPE	NO.	SIZE	LENGTH		LOCATION	A		B		C		D	
				FT	IN		FT	IN	FT	IN	FT	IN	FT	IN
B1	14	64	#5	10	0	CAP	2	4	2	2				
B2	STR	32	#7	17	8	CAP								
B3	STR	16	#5	17	8	CAP								
B4	STR	6	#5	7	10	CAP & WING								
B5	STR	8	#5	8	4	CAP & WING								
B6	STR	8	#5	8	10	CAP & WING								
B7	STR	24	#5	9	4	CAP & WING								
B8	8	8	#6	5	9	WING	3	3	2	6	1	1 1/4	2	2 3/8
B9	STR	32	#5	5	4	WING								
B10	STR	44	#8	3	0	CAP								



BAR TYPES



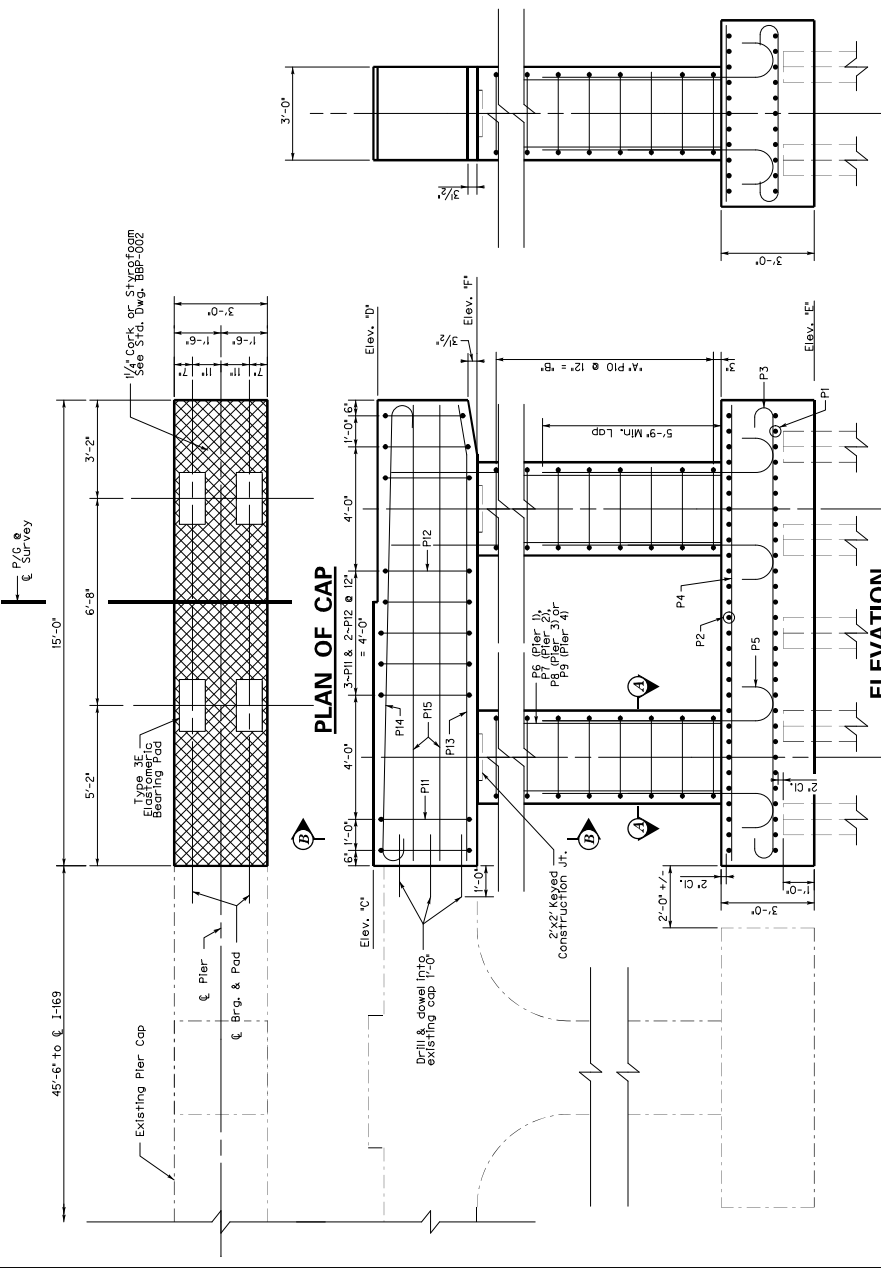
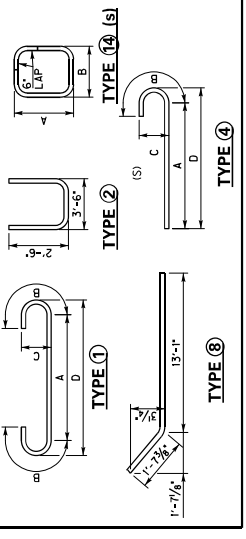
NOTE: The cost of drilling holes, material and labor for dowels shall be incidental to the cost of Class 'A' Concrete.

 COMMONWEALTH OF KENTUCKY DEPARTMENT OF HIGHWAYS	 HMB PROFESSIONAL ENGINEERS, INC.	PREPARED BY HMB PROFESSIONAL ENGINEERS, INC.	CHECKED BY L. Baker L. Baker	END BENTS (2 of 2) CROSSING I.C.R.R. & PLEASANT RUN CREEK	COUNTY OF HOPKINS DRAWING NO. 28763
DATE: 5/2/23 DESIGNED BY: B. Ruff DETAILED BY: B. Ruff	ROUTE I-169	ITEM NO. 2-131.00 SHEET NO. S8	DATE PLOTTED: 5/2/23 USER: S3058	FILE: SFILES	REVISION

PIERS BILL OF REINFORCEMENT

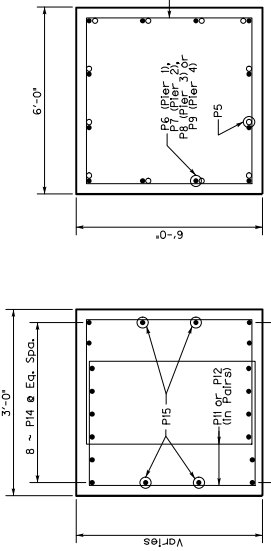
MARK	TYPE	NO.	SIZE	LENGTH		LOCATION	A		B		C		D	
				FT	IN		IN	IN	IN	IN	IN	IN	IN	IN
P1	STR	232	#6	6	6	FOOTING BOT	4	10	0	10	0	6	5	4
P2	STR	232	#6	5	4	FOOTING TOP	13	10	0	10	0	6	14	4
P3	STR	88	#6	15	6	FOOTING TOP	8	1	11	0	11	3/4	7	6
P4	STR	88	#6	15	4	FOOTING TOP								
P5	STR	4	#6	4	9	FOOTING DOVEL								
P6	STR	48	#9	29	9	COLLUMN								
P7	STR	48	#9	29	9	COLLUMN								
P8	STR	48	#9	34	9	COLLUMN								
P9	STR	48	#9	34	8	COLLUMN								
P10	STR	48	#9	34	8	COLLUMN								
P11	STR	40	#5	12	4	COLLUMN TIES								
P12	STR	40	#5	12	4	CAP STIRRUP								
P13	STR	8	#6	18	9	CAP STIRRUP								
P14	STR	64	#8	16	10	CAP TOP								
P15	STR	32	#5	14	8	CAP SIDES								
DOWELS		STR	#8	3	0	DOWELS								

BAR TYPES

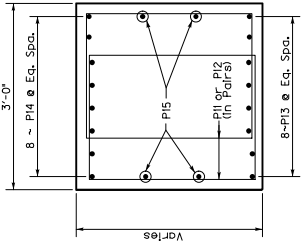


Note: See all exposed surfaces with concrete sealer to 6' below grade.

SECTION A-A

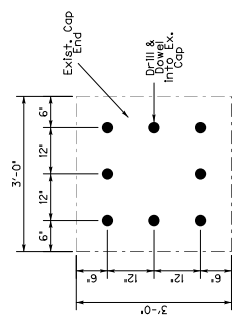


SECTION B-B



	*A	*B	Elev. 'D'	Elev. 'C'	Elev. 'D'	Elev. 'E'	Elev. 'F'
NB Pier 1	27	26'-0"	425.62	425.73	425.48	392.73	422.23
NB Pier 2	27	26'-0"	425.77	425.64	425.64	392.90	422.40
NB Pier 3	32	31'-0"	425.79	425.66	425.66	387.95	422.45
NB Pier 4	30	29'-0"	425.72	425.58	425.58	387.89	422.39
SB Pier 1	27	26'-0"	425.72	425.58	425.58	392.73	422.23
SB Pier 2	27	26'-0"	425.85	425.72	425.72	392.90	422.40
SB Pier 3	32	31'-0"	425.84	425.71	425.71	387.95	422.45
SB Pier 4	30	29'-0"	425.76	425.62	425.62	387.89	422.39

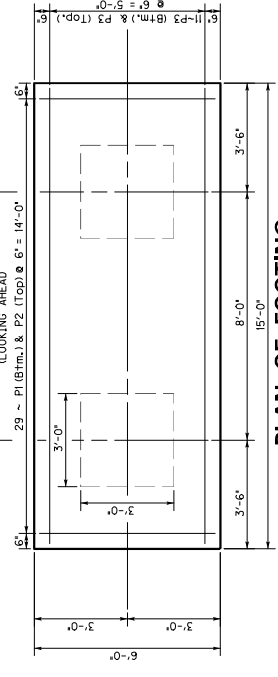
DRILL & DOWEL LOCATIONS



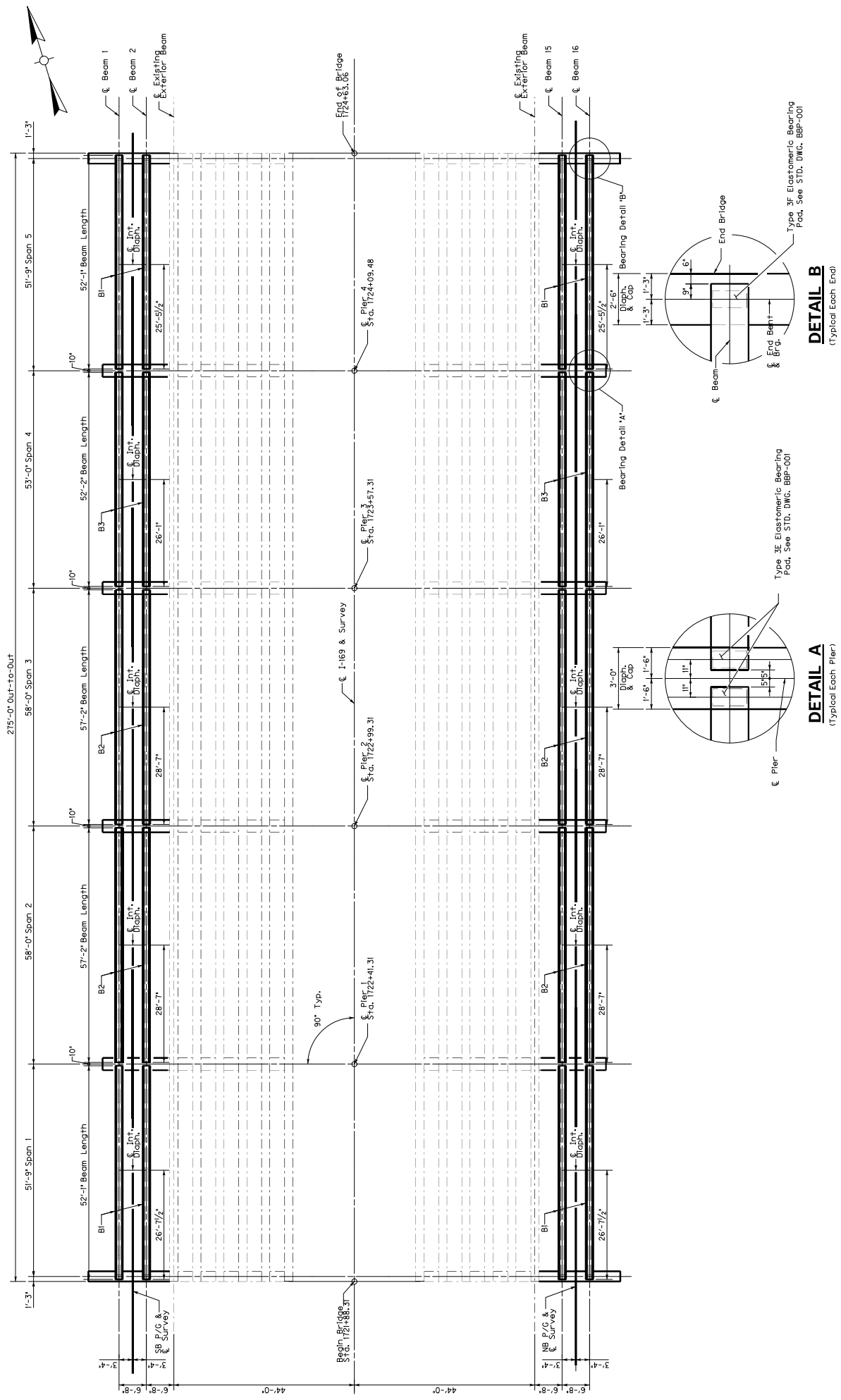
BAR CLEARANCE

CAP	2"
COLUMN	2"
FOOTING	3"

PLAN OF FOOTING



 COMMONWEALTH OF KENTUCKY DEPARTMENT OF HIGHWAYS	REVISION: _____ DATE: _____	PREPARED BY: HMB HMB PROFESSIONAL ENGINEERS, INC.	CHECKED BY: _____ L. Baker	DATE: 5/2023 DESIGNED BY: B. RAE DETAILED BY: B. RAE	COUNTY OF: HOPKINS DRAWING NO.: 287630
	USER: S3085 DATE PLOTTED: 5/20/23 5:10PM FILE: S3085	ROUTE: I-169	CROSSING: I.C.R.R. & PLEASANT RUN CREEK	ITEM NO.: 2-131.00 SHEET NO.: S9	CONTRACT NO.: 231326 SHEET NO.: 129 OF 390



 COMMONWEALTH OF KENTUCKY DEPARTMENT OF HIGHWAYS	REVISION DATE DATE PLOTTED: 3/07/23	PREPARED BY HMB PROFESSIONAL ENGINEERS, INC.	CHECKED BY _____	ROUTE I-169	ITEM NO. 2-131.00	COUNTY OF HOPKINS
	USER: SPOLES	HMB	CROSSING I.C.R.R. & PLEASANT RUN CREEK	SHEET NO. 10	DRAWING NO. 287830	BRIDGE NO. 1-169

General Notes

CONCRETE: Ensure prestressed girder concrete is in accordance with these plans and the specifications. For prestressed beams: MATERIALS DESIGN SPECIFICATIONS: For prestressed beams: $f'_c = 60,000$ psi $f'_s = 270,000$ psi

PRESTRESSING REINFORCEMENT: Ensure that strands are 0.6" diameter, 0.217 sq. in., uncoated seven-wire strands 270,000 psi. Apply an initial prestress of 14,842 lbs. per strand at 100% transfer. The contractor shall provide the necessary concrete curing, and the contractor shall be responsible for the design of beam and subsequent billings of the contractor. The designer of the beam and subsequent plan modifications will be made for any request of alternate strand type or arrangement. The designer of the original plan is responsible for the billing and work.

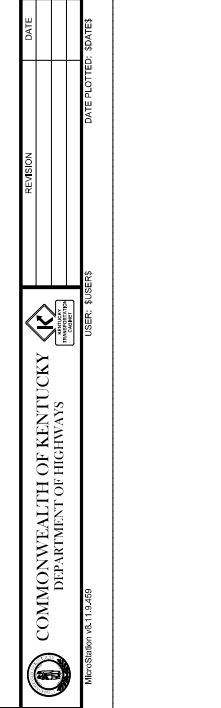
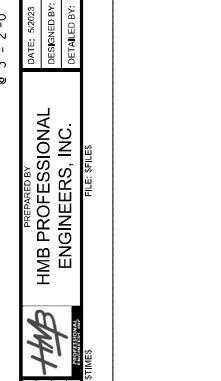
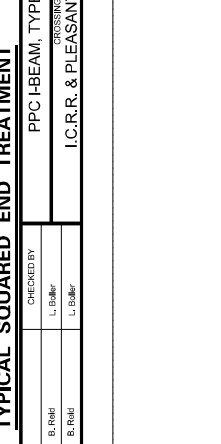
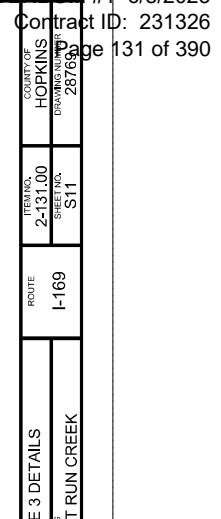
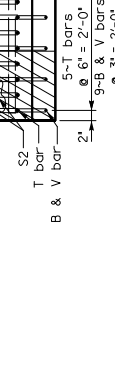
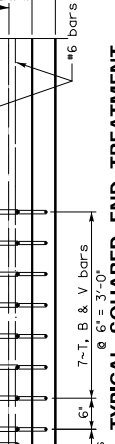
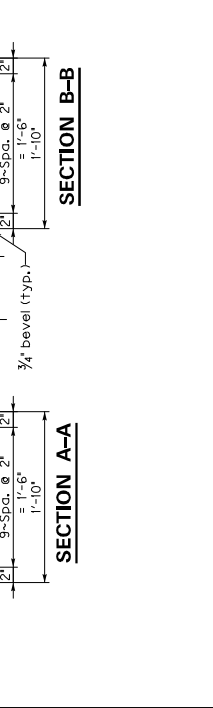
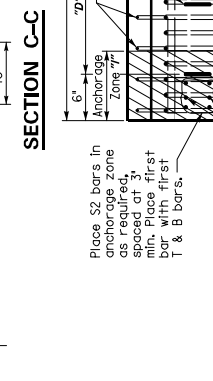
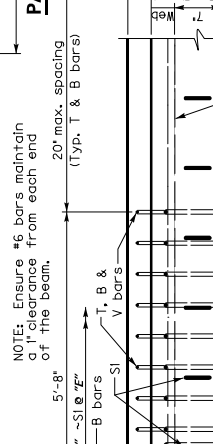
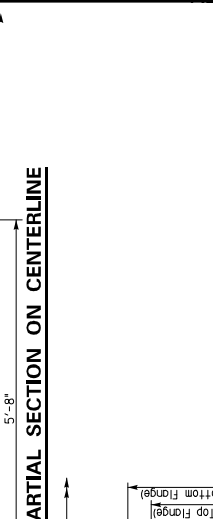
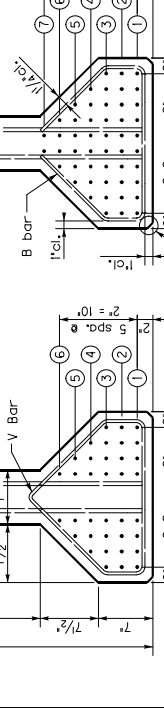
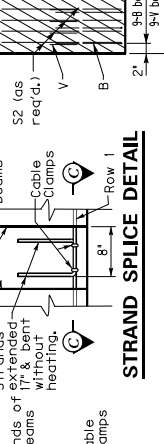
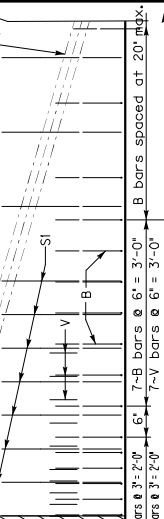
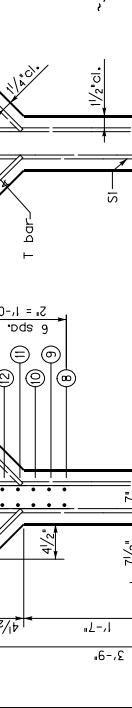
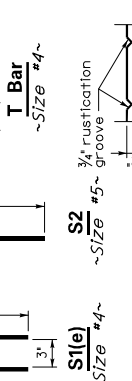
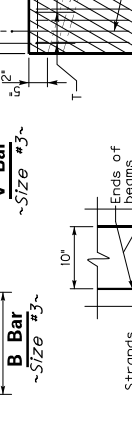
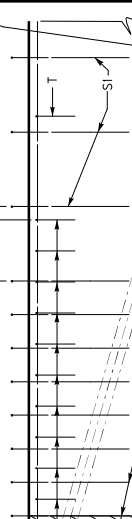
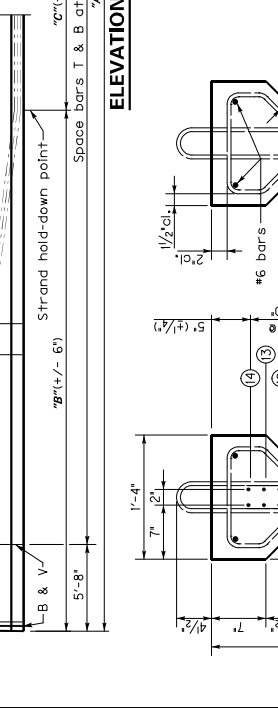
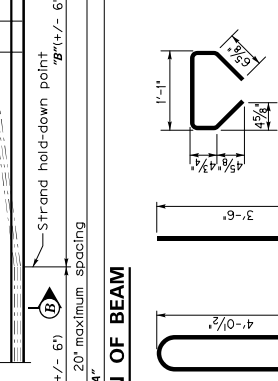
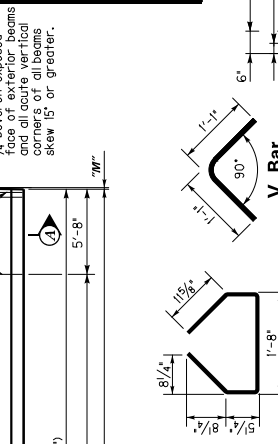
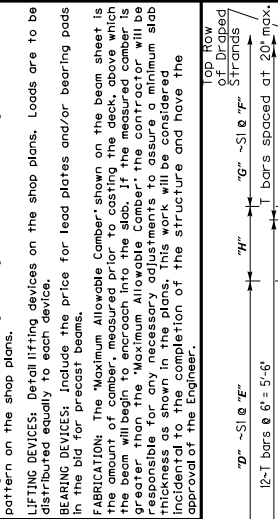
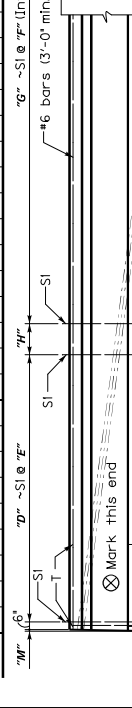
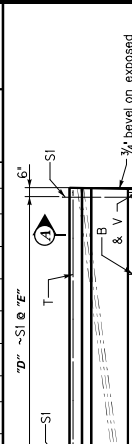
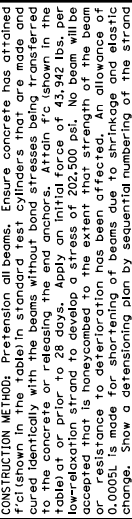
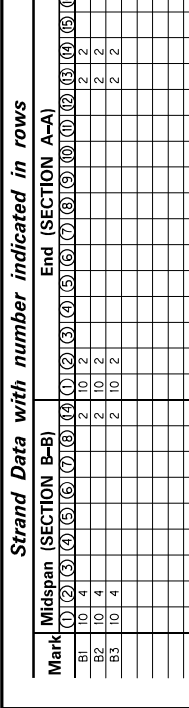
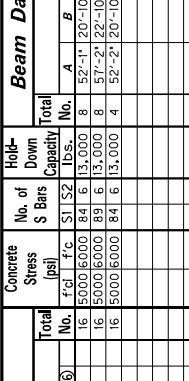
CONSTRUCTION METHOD: Prestension all beams. Ensure concrete has attained f'_c (shown in the table) in standard test cylinders that are made and cured identically with the beams without bond stresses being transferred to the concrete or releasing the end anchors. Attach f_c shown in the table to the end of the strand. Apply an initial 100% prestress to the beams before concrete has attained f'_c . No concrete shall be placed on the beams until the concrete has attained the strength accepted that is honeycombed to the extent that strength of the beam or resistance to deterioration has been affected. An allowance of 0.0005L is made for shortening of beams due to shrinkage and elastic change. Show a detensioning plan by sequential numbering of the strand bottom on the shop plans.

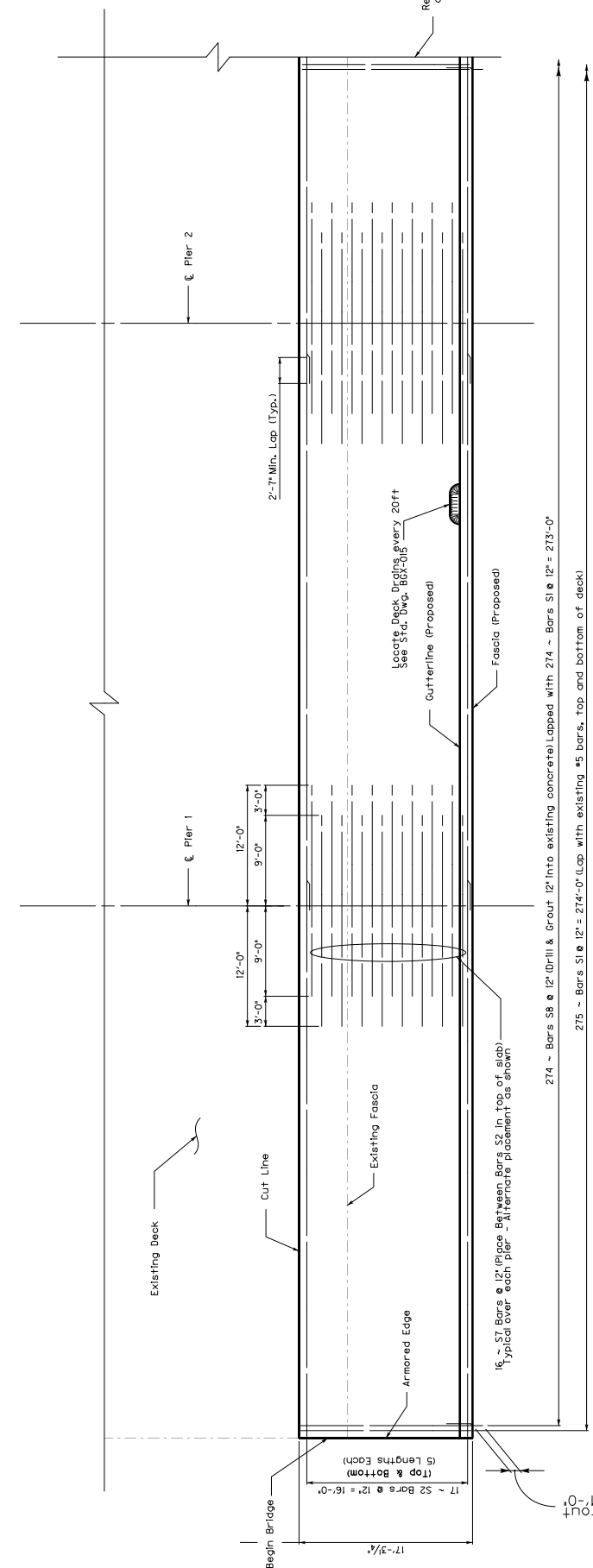
LIFTING DEVICES: Detail lifting devices on the shop plans. Loads are to be distributed equally to each device.

BEARING DEVICES: Include the price for lead plates and/or bearing pads in the bid for precast beams.

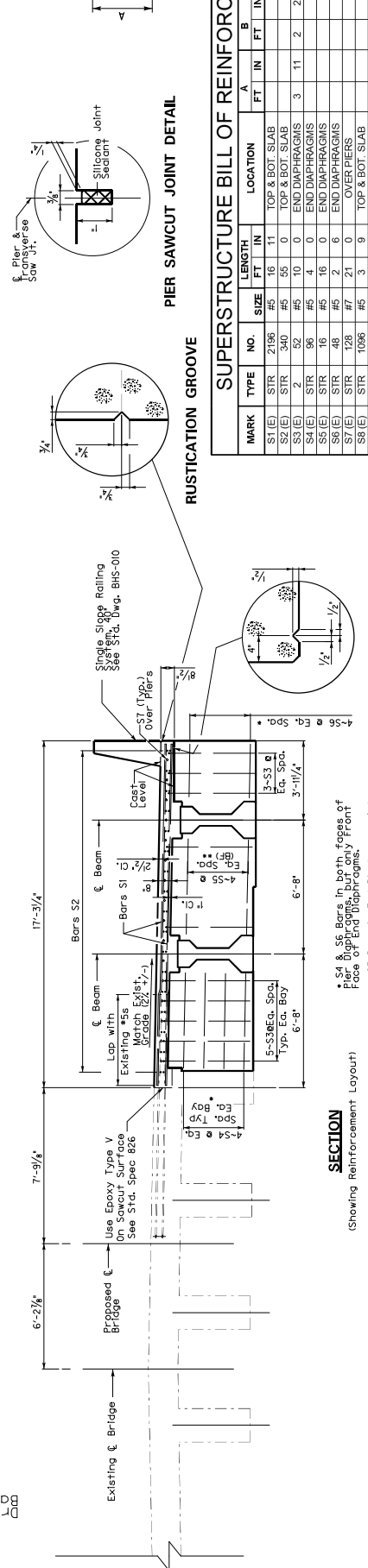
FABRICATION: The "Maximum Allowable Camber" shown on the beam sheet is the amount of camber, measured prior to casting the deck, above which the beam will begin to encroach into the slab. If the measured camber is greater than the "Maximum Allowable Camber," the contractor will be responsible for determining the amount of camber to be removed. Maximum slab thickness as shown in the plans. This work will be considered incidental to the completion of the structure and have the approval of the Engineer.

Beam Data (measured along centerline)		Concrete Stress (psi)		No. of S Bars		Hold-down Capacity		Dimensions											Maximum Allowable Camber	
Mark	Midspan (SECTION B-B)	End (SECTION A-A)	Total	f'_c	f'_s	S1	S2	Total	A	B	C	D	E	F	G	H	I	M	Appr. Weight	
B1	2 10 2	2 10 2	2 10 2	5000	6000	84	6	13,000	8	52'-1"	20'-10"	10'-5"	24'-4"	12'-36	47'	111'A	30,364	2"		
B2	2 10 2	2 10 2	2 10 2	5000	6000	89	6	13,000	8	57'-2"	22'-10"	11'-6"	24'-4"	12'-41	5'	111'A	33,328	2"		
B3	2 10 2	2 10 2	2 10 2	5000	6000	84	6	13,000	4	52'-2"	20'-10"	10'-8"	24'-4"	12'-36	5'	111'A	30,413	2"		





PARTIAL PLAN
(Showing Reinforcement Layout)



SECTION
(Showing Reinforcement Layout)

SUPERSTRUCTURE BILL OF REINFORCEMENT

MARK	TYPE	NO.	SIZE	LENGTH FT IN	LOCATION	A FT IN	B FT IN	C FT IN	D FT IN
S1 (E)	STR	2186	#5	16	11				
S2 (E)	STR	340	#5	55	0				
S3 (E)	STR	2	52	#5	10	0			2
S4 (E)	STR	96	#5	4	0				2
S5 (E)	STR	16	#5	16	0				2
S6 (E)	STR	48	#5	2	6				2
S7 (E)	STR	128	#7	21	0				2
S8 (E)	STR	1066	#5	3	9				2

Note: Table includes quantities for both NB and SB structures.

DRIP NOTCH

PIER SAWCUT JOINT DETAIL

RUSTICATION GROOVE

SINGLE SLOPE RAILING

 COMMONWEALTH OF KENTUCKY DEPARTMENT OF HIGHWAYS	REVISION DATE DATE PLOTTED: 5/20/23	PREPARED BY HMB HMB PROFESSIONAL ENGINEERS, INC.	CHECKED BY L. Baker L. Baker	ROUTE I-169	COUNTY OF HOPKINS
	USER: S3085	FILE: S3085	CROSSING I.C.R.R. & PLEASANT RUN CREEK	SHEET NO. S12	DRAWING NO. 287630

DATE: 5/20/23
 DESIGNED BY: B. RAE
 DETAILER BY: R. RAE
 DATE PLOTTED: 5/20/23
 FILE: S3085

N O T I C E

**DEPARTMENT OF THE ARMY
CORPS OF ENGINEERS 404
NATIONWIDE 14 PERMIT AUTHORIZATION
KENTUCKY DIVISION OF WATER 401 WQC**

3/27/2023

PROJECT: Hopkins County, Item No. 2-131
Modernize Edward T. Breathitt – Pennyrile Parkway

The Section 404 & 401 activities for this project have been previously permitted under the authority of the Department of the Army Nationwide Permit No. 14 “Linear Transportation Projects” & Division of Water General Water Quality Certification. In order for these authorizations to be valid, the attached conditions must be followed. The contractor shall post a copy of this Nationwide Permit & General WQC in a conspicuous location at the project site for the duration of construction and comply with the general conditions as required.

Station 1755+50

Extend a 30” culvert on an U.T. of Pleasant Run. The **intermittent** stream will have impacts below the normal high-water mark. The estimated area of impact is **150 linear feet** and **0.001** acres.

Station 1723+00

Add bridge piers on Pleasant Run. The **perennial** stream will have impacts below the normal high-water mark. The estimated area of impact is **250 linear feet** and **0.07** acres.

This project involves work near and/or within Jurisdictional Waters of the United States as defined by the United States Army Corps of Engineers and therefore requires a Nationwide 14 General 404 Permit. The Division of Water certified this General Permit with several conditions (See attached). One that should be brought to your attention is regarding the use of heavy equipment in the stream channel. If there is need to cross the stream channel with heavy equipment or conduct work from within the stream channel a working platform or temporary crossing is authorized. This should be constructed with clean rock and sufficient pipe to allow stream flow to continue unimpeded (see attached typical drawing).

In order for this authorization to be valid, the attached conditions must be followed. The contractor shall post a copy of this Nationwide Approval in a conspicuous location at the project site for the duration of construction and comply with the general conditions as required.

MATERIAL SUMMARY

CONTRACT ID: 231326

NHPP 0411(032)

DE02490042326

PENNYRILE PARKWAY (PW 9004) CONVERT PARKWAY TO INTERSTATE BEGINNING AT I24 (MP 0.000) EXTENDING NORTH TO THE HOPKINS COUNTY LINE (MP 28.095) ASPHALT REHAB INTERSTATE/PARKWAY, A DISTANCE OF 28.09 MILES.

Project Line No	Bid Code	DESCRIPTION	Quantity	Unit
0005	00100	ASPHALT SEAL AGGREGATE	12.00	TON
0010	00103	ASPHALT SEAL COAT	2.00	TON
0015	00335	CL4 ASPH SURF 0.50A PG76-22	237.00	TON
0020	02676	MOBILIZATION FOR MILL & TEXT - CHRISTIAN COUNTY	1.00	LS
0025	02677	ASPHALT PAVE MILLING & TEXTURING	457.00	TON
0030	20071EC	JOINT ADHESIVE	1,360.00	LF
0035	24785EC	FIBER REINFORCEMENT FOR HMA	237.00	TON
0040	24970EC	ASPHALT MATERIAL FOR TACK NON-TRACKING	1.00	TON
0045	01982	DELINEATOR FOR GUARDRAIL MONO DIRECTIONAL WHITE	34.00	EACH
0050	02367	GUARDRAIL END TREATMENT TYPE 1	1.00	EACH
0055	02381	REMOVE GUARDRAIL	1,750.00	LF
0060	02562	TEMPORARY SIGNS	500.00	SQFT
0065	02650	MAINTAIN & CONTROL TRAFFIC - CHRISTIAN COUNTY	1.00	LS
0070	02671	PORTABLE CHANGEABLE MESSAGE SIGN	2.00	EACH
0075	02696	SHOULDER RUMBLE STRIPS	1,400.00	LF
0080	02726	STAKING - CHRISTIAN COUNTY	1.00	LS
0085	02775	ARROW PANEL	2.00	EACH
0090	06511	PAVE STRIPING-TEMP PAINT-6 IN	1,575.00	LF
0095	06542	PAVE STRIPING-THERMO-6 IN W	876.00	LF
0100	06543	PAVE STRIPING-THERMO-6 IN Y	700.00	LF
0105	06613	INLAID PAVEMENT MARKER-B W/R	10.00	EACH
0110	10020NS	FUEL ADJUSTMENT	369.00	DOLL
0115	10030NS	ASPHALT ADJUSTMENT	926.00	DOLL
0120	20411ED	LAW ENFORCEMENT OFFICER	20.00	HOURL
0125	21802EN	G/R STEEL W BEAM-S FACE (7 FT POST)	1,700.00	LF
0130	24891EC	PAVE MOUNT INFRARED TEMP EQUIPMENT	16,320.00	SF
0135	26136EC	PORTABLE QUEUE WARNING ALERT SYSTEM	2.00	MONT
0140	26137EC	QUEUE WARNING PCMS	8.00	MONT
0145	26138EC	QUEUE WARNING PORTABLE RADAR SENSORS	8.00	MONT
0150	02568	MOBILIZATION	1.00	LS
0155	02569	DEMOBILIZATION	1.00	LS

CONTRACT ID: 231326

NHPP 0411(032)

DE05490042326

PENNYRILE PARKWAY(PW 9004) CONVERT PARKWAY TO INTERSTATE FROM THE CHRISTIAN/HOPKINS COUNTY LINE (MP 28.095) EXTENDING NORTH TO I69 (MP 34.256) ASPHALT REHAB INTERSTATE/PARKWAY, A DISTANCE OF 6.16 MILES.

Project Line No	Bid Code	DESCRIPTION	Quantity	Unit
0160	00003	CRUSHED STONE BASE	17,804.00	TON

MATERIAL SUMMARY

Project Line No	Bid Code	DESCRIPTION	Quantity	Unit
0165	00080	CRUSHED AGGREGATE SIZE NO 23	9,611.00	TON
0170	00100	ASPHALT SEAL AGGREGATE	238.00	TON
0175	00103	ASPHALT SEAL COAT	29.00	TON
0180	00194	LEVELING & WEDGING PG76-22	358.00	TON
0185	00217	CL4 ASPH BASE 1.00D PG64-22	6,903.00	TON
0190	00219	CL4 ASPH BASE 1.00D PG76-22	5,282.00	TON
0195	00335	CL4 ASPH SURF 0.50A PG76-22	4,170.00	TON
0200	02069	JPC PAVEMENT-10 IN	2,800.00	SQYD
0205	02083	JPC PAVEMENT-10 IN SHLD	1,633.00	SQYD
0210	02676	MOBILIZATION FOR MILL & TEXT - HOPKINS COUNTY	1.00	LS
0215	02677	ASPHALT PAVE MILLING & TEXTURING	2,172.00	TON
0220	20071EC	JOINT ADHESIVE	23,556.00	LF
0225	24970EC	ASPHALT MATERIAL FOR TACK NON-TRACKING	33.00	TON
0230	01001	PERFORATED PIPE-6 IN	420.00	LF
0235	01010	NON-PERFORATED PIPE-4 IN	20.00	LF
0240	01982	DELINEATOR FOR GUARDRAIL MONO DIRECTIONAL WHITE	217.00	EACH
0245	01983	DELINEATOR FOR GUARDRAIL MONO DIRECTIONAL YELLOW	70.00	EACH
0250	01984	DELINEATOR FOR BARRIER - WHITE	168.00	EACH
0255	01985	DELINEATOR FOR BARRIER - YELLOW	43.00	EACH
0260	02003	RELOCATE TEMP CONC BARRIER	4,320.00	LF
0265	02091	REMOVE PAVEMENT	4,434.00	SQYD
0270	02159	TEMP DITCH	3,443.00	LF
0275	02160	CLEAN TEMP DITCH	1,721.00	LF
0280	02200	ROADWAY EXCAVATION	43,651.00	CUYD
0285	02262	FENCE-WOVEN WIRE TYPE 1	1,920.00	LF
0290	02265	REMOVE FENCE	1,920.00	LF
0295	02367	GUARDRAIL END TREATMENT TYPE 1	13.00	EACH
0300	02369	GUARDRAIL END TREATMENT TYPE 2A	7.00	EACH
0305	02381	REMOVE GUARDRAIL	14,900.00	LF
0310	02484	CHANNEL LINING CLASS III	270.00	TON
0315	02545	CLEARING AND GRUBBING - 6 ACRES	1.00	LS
0320	02555	CONCRETE-CLASS B	5.00	CUYD
0325	02562	TEMPORARY SIGNS	1,600.00	SQFT
0330	02587	HOOK BOLT WITH EXPAN ANCHOR	74.00	EACH
0335	02602	FABRIC-GEOTEXTILE CLASS 1	25,300.00	SQYD
0340	02603	FABRIC-GEOTEXTILE CLASS 2	6,306.00	SQYD
0345	02650	MAINTAIN & CONTROL TRAFFIC - HOPKINS COUNTY	1.00	LS
0350	02671	PORTABLE CHANGEABLE MESSAGE SIGN	6.00	EACH
0355	02695	RUMBLE STRIPS TYPE 3	252.00	LF
0360	02696	SHOULDER RUMBLE STRIPS	29,762.00	LF
0365	02703	SILT TRAP TYPE A	7.00	EACH
0370	02704	SILT TRAP TYPE B	7.00	EACH
0375	02705	SILT TRAP TYPE C	7.00	EACH
0380	02706	CLEAN SILT TRAP TYPE A	7.00	EACH
0385	02707	CLEAN SILT TRAP TYPE B	7.00	EACH
0390	02708	CLEAN SILT TRAP TYPE C	7.00	EACH
0395	02726	STAKING - HOPKINS COUNTY	1.00	LS
0400	02775	ARROW PANEL	2.00	EACH
0405	02898	RELOCATE CRASH CUSHION	6.00	EACH

MATERIAL SUMMARY

Project Line No	Bid Code	DESCRIPTION	Quantity	Unit
0410	03171	CONCRETE BARRIER WALL TYPE 9T	6,240.00	LF
0415	05950	EROSION CONTROL BLANKET	30,485.00	SQYD
0420	05952	TEMP MULCH	20,323.00	SQYD
0425	05953	TEMP SEEDING AND PROTECTION	15,243.00	SQYD
0430	05963	INITIAL FERTILIZER	1.60	TON
0435	05964	MAINTENANCE FERTILIZER	1.00	TON
0440	05992	AGRICULTURAL LIMESTONE	19.00	TON
0445	06401	FLEXIBLE DELINEATOR POST-M/W	287.00	EACH
0450	06404	FLEXIBLE DELINEATOR POST-M/Y	114.00	EACH
0455	06511	PAVE STRIPING-TEMP PAINT-6 IN	50,634.00	LF
0460	06513	PAVE STRIPING-TEMP PAINT-12 IN	1,330.00	LF
0465	06542	PAVE STRIPING-THERMO-6 IN W	19,080.00	LF
0470	06543	PAVE STRIPING-THERMO-6 IN Y	12,361.00	LF
0475	06546	PAVE STRIPING-THERMO-12 IN W	1,588.00	LF
0480	06549	PAVE STRIPING-TEMP REM TAPE-B	6,750.00	LF
0485	06550	PAVE STRIPING-TEMP REM TAPE-W	19,745.00	LF
0490	06551	PAVE STRIPING-TEMP REM TAPE-Y	6,650.00	LF
0495	06556	PAVE STRIPING-DUR TY 1-6 IN W	2,290.00	LF
0500	06557	PAVE STRIPING-DUR TY 1-6 IN Y	1,890.00	LF
0505	06569	PAVE MARKING-THERMO CROSS-HATCH	469.00	SQFT
0510	06585	PAVEMENT MARKER TY IVA-MW TEMP	180.00	EACH
0515	06586	PAVEMENT MARKER TY IVA-MY TEMP	90.00	EACH
0520	06613	INLAID PAVEMENT MARKER-B W/R	389.00	EACH
0525	06614	INLAID PAVEMENT MARKER-B Y/R	76.00	EACH
0530	08903	CRASH CUSHION TY VI CLASS BT TL3	5.00	EACH
0535	10020NS	FUEL ADJUSTMENT	44,714.00	DOLL
0540	10030NS	ASPHALT ADJUSTMENT	65,341.00	DOLL
0545	20411ED	LAW ENFORCEMENT OFFICER	500.00	HOURL
0550	21289ED	LONGITUDINAL EDGE KEY	4,830.00	LF
0555	21802EN	G/R STEEL W BEAM-S FACE (7 FT POST)	14,250.00	LF
0560	24585EC	SECURITY PLATE ASSEMBLY	16.00	EACH
0565	24679ED	PAVE MARK THERMO CHEVRON	600.00	SQFT
0570	24891EC	PAVE MOUNT INFRARED TEMP EQUIPMENT	322,146.00	SF
0575	25078ED	THRIE BEAM GUARDRAIL TRANSITION TL-3	17.00	EACH
0580	26136EC	PORTABLE QUEUE WARNING ALERT SYSTEM	12.00	MONT
0585	26137EC	QUEUE WARNING PCMS	48.00	MONT
0590	26138EC	QUEUE WARNING PORTABLE RADAR SENSORS	48.00	MONT
0595	40030	TEMPORARY SILT FENCE	3,443.00	LF
0600	00462	CULVERT PIPE-18 IN	57.00	LF
0605	00466	CULVERT PIPE-30 IN	20.00	LF
0610	00521	STORM SEWER PIPE-15 IN	15.00	LF
0615	00522	STORM SEWER PIPE-18 IN	57.00	LF
0620	00526	STORM SEWER PIPE-30 IN	153.00	LF
0625	01202	PIPE CULVERT HEADWALL-15 IN	2.00	EACH
0630	01310	REMOVE PIPE	88.00	LF
0635	01450	S & F BOX INLET-OUTLET-18 IN	3.00	EACH
0640	01452	S & F BOX INLET-OUTLET-30 IN	1.00	EACH
0645	01538	DROP BOX INLET TYPE 7	1.00	EACH
0650	01634	CAP CURB BOX INLET	11.00	EACH
0655	01650	JUNCTION BOX	5.00	EACH

MATERIAL SUMMARY

Project Line No	Bid Code	DESCRIPTION	Quantity	Unit
0660	01726	SAFETY BOX INLET-18 IN SDB-1	1.00	EACH
0665	01767	MANHOLE TYPE C	1.00	EACH
0670	02607	FABRIC-GEOTEXTILE CLASS 2 FOR PIPE	450.00	SQYD
0675	02625	REMOVE HEADWALL	19.00	EACH
0680	02690	SAFELOADING	34.00	CUYD
0685	08100	CONCRETE-CLASS A	6.75	CUYD
0695	23378EC	CONCRETE SEALING - (REVISED 6-8-23)	5,810.00	SQFT
0705	02231	STRUCTURE GRANULAR BACKFILL	375.00	CUYD
0710	02403	REMOVE CONCRETE MASONRY	71.30	CUYD
0715	03299	ARMORED EDGE FOR CONCRETE	32.00	LF
0720	08003	FOUNDATION PREPARATION - DWG 28769 - NB EB9004 OVER DRAKES CREEK	1.00	LS
0725	08033	TEST PILES - (REVISED 6-8-23)	426.00	LF
0730	08046	PILES-STEEL HP12X53 - (REVISED 6-8-23)	2,864.00	LF
0735	08100	CONCRETE-CLASS A - (REVISED 6-8-23)	169.20	CUYD
0740	08104	CONCRETE-CLASS AA	156.80	CUYD
0745	08150	STEEL REINFORCEMENT	25,086.00	LB
0750	08151	STEEL REINFORCEMENT-EPOXY COATED - (REVISED 6-8-23)	29,793.00	LB
0755	08633	PRECAST PC I BEAM TYPE 3 - (REVISED 6-8-23)	541.30	LF
0760	23378EC	CONCRETE SEALING	12,382.00	SQFT
0765	25028ED	RAIL SYSTEM SINGLE SLOPE - 40 IN	275.00	LF
0770	02231	STRUCTURE GRANULAR BACKFILL	375.00	CUYD
0775	02403	REMOVE CONCRETE MASONRY	71.30	CUYD
0780	03299	ARMORED EDGE FOR CONCRETE	32.00	LF
0785	08003	FOUNDATION PREPARATION - DWG 28769 - SB EB9004 OVER DRAKES CREEK	1.00	LS
0790	08033	TEST PILES - (REVISED 6-8-23)	426.00	LF
0795	08046	PILES-STEEL HP12X53 - (REVISED 6-8-23)	2,864.00	LF
0800	08100	CONCRETE-CLASS A - (REVISED 6-8-23)	169.20	CUYD
0805	08104	CONCRETE-CLASS AA	156.80	CUYD
0810	08150	STEEL REINFORCEMENT	25,086.00	LB
0815	08151	STEEL REINFORCEMENT-EPOXY COATED - (REVISED 6-8-23)	29,793.00	LB
0820	08633	PRECAST PC I BEAM TYPE 3 - (REVISED 6-8-23)	541.30	LF
0825	23378EC	CONCRETE SEALING	12,382.00	SQFT
0830	25028ED	RAIL SYSTEM SINGLE SLOPE - 40 IN	275.00	LF
0835	02403	REMOVE CONCRETE MASONRY	12.50	CUYD
0840	23032EN	BRIDGE BARRIER RETROFIT	680.10	LF
0845	23378EC	CONCRETE SEALING	5,847.00	SQFT
0850	04700	POLE 30 FT MTG HT	16.00	EACH
0855	04723	BRACKET 10 FT	16.00	EACH
0860	04740	POLE BASE	16.00	EACH
0865	04750	TRANSFORMER BASE	16.00	EACH
0870	04780	FUSED CONNECTOR KIT	32.00	EACH
0875	04795	CONDUIT-2 IN	150.00	LF
0880	04800	MARKER	1.00	EACH
0885	04811	ELECTRICAL JUNCTION BOX TYPE B	10.00	EACH
0890	04820	TRENCHING AND BACKFILLING	3,500.00	LF
0895	04821	OPEN CUT ROADWAY	120.00	LF
0900	04832	WIRE-NO. 12	1,950.00	LF

MATERIAL SUMMARY

Project Line No	Bid Code	DESCRIPTION	Quantity	Unit
0905	04833	WIRE-NO. 8	7,200.00	LF
0910	04834	WIRE-NO. 6	2,200.00	LF
0915	04861	CABLE-NO. 6/3C DUCTED	1,600.00	LF
0920	04940	REMOVE LIGHTING	1.00	LS
0925	04942	REMOVE STORE & REINSTALL POLE	1.00	EACH
0930	23161EN	POLE BASE-HIGH MAST	8.00	CUYD
0935	24900EC	PVC CONDUIT-1 1/4 IN-SCHEDULE 80	3,200.00	LF
0940	02568	MOBILIZATION	1.00	LS
0945	02569	DEMOBILIZATION	1.00	LS
0950	23032EN	BRIDGE BARRIER RETROFIT - (ADDED 6-8-23)	710.70	LF
0955	23550EC	REMOVE RAIL - (ADDED 6-8-23)	710.70	LF
0960	08020	CRUSHED AGGREGATE SLOPE PROT - (ADDED 6-8-23)	69.80	TON
0965	08020	CRUSHED AGGREGATE SLOPE PROT - (ADDED 6-8-23)	69.80	TON

PROPOSAL BID ITEMS

231326

Page 1 of 5

Report Date 6/8/23

Section: 0001 - PAVING

LINE	BID CODE	ALT	DESCRIPTION	QUANTITY	UNIT	UNIT PRIC	FP	AMOUNT
0010	00003		CRUSHED STONE BASE	17,804.00	TON		\$	
0020	00080		CRUSHED AGGREGATE SIZE NO 23	9,611.00	TON		\$	
0030	00100		ASPHALT SEAL AGGREGATE	250.00	TON		\$	
0040	00103		ASPHALT SEAL COAT	31.00	TON		\$	
0050	00194		LEVELING & WEDGING PG76-22	358.00	TON		\$	
0060	00217		CL4 ASPH BASE 1.00D PG64-22	6,903.00	TON		\$	
0070	00219		CL4 ASPH BASE 1.00D PG76-22	5,282.00	TON		\$	
0080	00335		CL4 ASPH SURF 0.50A PG76-22	4,407.00	TON		\$	
0090	02069		JPC PAVEMENT-10 IN	2,800.00	SQYD		\$	
0100	02083		JPC PAVEMENT-10 IN SHLD	1,633.00	SQYD		\$	
0110	02676		MOBILIZATION FOR MILL & TEXT CHRISTIAN COUNTY	1.00	LS		\$	
0120	02676		MOBILIZATION FOR MILL & TEXT HOPKINS COUNTY	1.00	LS		\$	
0130	02677		ASPHALT PAVE MILLING & TEXTURING	2,629.00	TON		\$	
0140	20071EC		JOINT ADHESIVE	24,916.00	LF		\$	
0150	24785EC		FIBER REINFORCEMENT FOR HMA	237.00	TON		\$	
0160	24970EC		ASPHALT MATERIAL FOR TACK NON- TRACKING	34.00	TON		\$	

Section: 0002 - ROADWAY

LINE	BID CODE	ALT	DESCRIPTION	QUANTITY	UNIT	UNIT PRIC	FP	AMOUNT
0170	01001		PERFORATED PIPE-6 IN	420.00	LF		\$	
0180	01010		NON-PERFORATED PIPE-4 IN	20.00	LF		\$	
0190	01982		DELINEATOR FOR GUARDRAIL MONO DIRECTIONAL WHITE	251.00	EACH		\$	
0200	01983		DELINEATOR FOR GUARDRAIL MONO DIRECTIONAL YELLOW	70.00	EACH		\$	
0210	01984		DELINEATOR FOR BARRIER - WHITE	168.00	EACH		\$	
0220	01985		DELINEATOR FOR BARRIER - YELLOW	43.00	EACH		\$	
0230	02003		RELOCATE TEMP CONC BARRIER	4,320.00	LF		\$	
0240	02091		REMOVE PAVEMENT	4,434.00	SQYD		\$	
0250	02159		TEMP DITCH	3,443.00	LF		\$	
0260	02160		CLEAN TEMP DITCH	1,721.00	LF		\$	
0270	02200		ROADWAY EXCAVATION	43,651.00	CUYD		\$	
0280	02262		FENCE-WOVEN WIRE TYPE 1	1,920.00	LF		\$	
0290	02265		REMOVE FENCE	1,920.00	LF		\$	
0300	02367		GUARDRAIL END TREATMENT TYPE 1	14.00	EACH		\$	
0310	02369		GUARDRAIL END TREATMENT TYPE 2A	7.00	EACH		\$	
0320	02381		REMOVE GUARDRAIL	16,650.00	LF		\$	
0330	02484		CHANNEL LINING CLASS III	270.00	TON		\$	
0340	02545		CLEARING AND GRUBBING 6 ACRES	1.00	LS		\$	
0350	02555		CONCRETE-CLASS B	5.00	CUYD		\$	
0360	02562		TEMPORARY SIGNS	2,100.00	SQFT		\$	
0370	02587		HOOK BOLT WITH EXPAN ANCHOR	74.00	EACH		\$	

PROPOSAL BID ITEMS

231326

Page 2 of 5

Report Date 6/8/23

LINE	BID CODE	ALT	DESCRIPTION	QUANTITY	UNIT	UNIT PRIC	FP	AMOUNT
0380	02602		FABRIC-GEOTEXTILE CLASS 1	25,300.00	SQYD		\$	
0390	02603		FABRIC-GEOTEXTILE CLASS 2	6,306.00	SQYD		\$	
0400	02650		MAINTAIN & CONTROL TRAFFIC CHRISTIAN COUNTY	1.00	LS		\$	
0410	02650		MAINTAIN & CONTROL TRAFFIC HOPKINS COUNTY	1.00	LS		\$	
0420	02671		PORTABLE CHANGEABLE MESSAGE SIGN	8.00	EACH		\$	
0430	02695		RUMBLE STRIPS TYPE 3	252.00	LF		\$	
0440	02696		SHOULDER RUMBLE STRIPS	31,162.00	LF		\$	
0450	02703		SILT TRAP TYPE A	7.00	EACH		\$	
0460	02704		SILT TRAP TYPE B	7.00	EACH		\$	
0470	02705		SILT TRAP TYPE C	7.00	EACH		\$	
0480	02706		CLEAN SILT TRAP TYPE A	7.00	EACH		\$	
0490	02707		CLEAN SILT TRAP TYPE B	7.00	EACH		\$	
0500	02708		CLEAN SILT TRAP TYPE C	7.00	EACH		\$	
0510	02726		STAKING CHRISTIAN COUNTY	1.00	LS		\$	
0520	02726		STAKING HOPKINS COUNTY	1.00	LS		\$	
0530	02775		ARROW PANEL	4.00	EACH		\$	
0540	02898		RELOCATE CRASH CUSHION	6.00	EACH		\$	
0550	03171		CONCRETE BARRIER WALL TYPE 9T	6,240.00	LF		\$	
0560	05950		EROSION CONTROL BLANKET	30,485.00	SQYD		\$	
0570	05952		TEMP MULCH	20,323.00	SQYD		\$	
0580	05953		TEMP SEEDING AND PROTECTION	15,243.00	SQYD		\$	
0590	05963		INITIAL FERTILIZER	1.60	TON		\$	
0600	05964		MAINTENANCE FERTILIZER	1.00	TON		\$	
0610	05992		AGRICULTURAL LIMESTONE	19.00	TON		\$	
0620	06401		FLEXIBLE DELINEATOR POST-M/W	287.00	EACH		\$	
0630	06404		FLEXIBLE DELINEATOR POST-M/Y	114.00	EACH		\$	
0640	06511		PAVE STRIPING-TEMP PAINT-6 IN	52,209.00	LF		\$	
0650	06513		PAVE STRIPING-TEMP PAINT-12 IN	1,330.00	LF		\$	
0660	06542		PAVE STRIPING-THERMO-6 IN W	19,956.00	LF		\$	
0670	06543		PAVE STRIPING-THERMO-6 IN Y	13,061.00	LF		\$	
0680	06546		PAVE STRIPING-THERMO-12 IN W	1,588.00	LF		\$	
0690	06549		PAVE STRIPING-TEMP REM TAPE-B	6,750.00	LF		\$	
0700	06550		PAVE STRIPING-TEMP REM TAPE-W	19,745.00	LF		\$	
0710	06551		PAVE STRIPING-TEMP REM TAPE-Y	6,650.00	LF		\$	
0720	06556		PAVE STRIPING-DUR TY 1-6 IN W	2,290.00	LF		\$	
0730	06557		PAVE STRIPING-DUR TY 1-6 IN Y	1,890.00	LF		\$	
0740	06569		PAVE MARKING-THERMO CROSS-HATCH	469.00	SQFT		\$	
0750	06585		PAVEMENT MARKER TY IVA-MW TEMP	180.00	EACH		\$	
0760	06586		PAVEMENT MARKER TY IVA-MY TEMP	90.00	EACH		\$	
0770	06613		INLAID PAVEMENT MARKER-B W/R	399.00	EACH		\$	
0780	06614		INLAID PAVEMENT MARKER-B Y/R	76.00	EACH		\$	
0790	08903		CRASH CUSHION TY VI CLASS BT TL3	5.00	EACH		\$	
0800	10020NS		FUEL ADJUSTMENT	45,083.00	DOLL	\$1.00	\$	\$45,083.00
0810	10030NS		ASPHALT ADJUSTMENT	66,267.00	DOLL	\$1.00	\$	\$66,267.00
0820	20411ED		LAW ENFORCEMENT OFFICER	520.00	HOURL		\$	
0830	21289ED		LONGITUDINAL EDGE KEY	4,830.00	LF		\$	
0840	21802EN		G/R STEEL W BEAM-S FACE (7 FT POST)	15,950.00	LF		\$	

PROPOSAL BID ITEMS

231326

Page 3 of 5

Report Date 6/8/23

LINE	BID CODE	ALT	DESCRIPTION	QUANTITY	UNIT	UNIT PRIC	FP	AMOUNT
0850	24585EC		SECURITY PLATE ASSEMBLY	16.00	EACH		\$	
0860	24679ED		PAVE MARK THERMO CHEVRON	600.00	SQFT		\$	
0870	24891EC		PAVE MOUNT INFRARED TEMP EQUIPMENT	338,466.00	SF		\$	
0880	25078ED		THRIE BEAM GUARDRAIL TRANSITION TL-3	17.00	EACH		\$	
0890	26136EC		PORTABLE QUEUE WARNING ALERT SYSTEM	14.00	MONT		\$	
0900	26137EC		QUEUE WARNING PCMS	56.00	MONT		\$	
0910	26138EC		QUEUE WARNING PORTABLE RADAR SENSORS	56.00	MONT		\$	
0920	40030		TEMPORARY SILT FENCE	3,443.00	LF		\$	

Section: 0003 - DRAINAGE

LINE	BID CODE	ALT	DESCRIPTION	QUANTITY	UNIT	UNIT PRIC	FP	AMOUNT
0930	00462		CULVERT PIPE-18 IN	57.00	LF		\$	
0940	00466		CULVERT PIPE-30 IN	20.00	LF		\$	
0950	00521		STORM SEWER PIPE-15 IN	15.00	LF		\$	
0960	00522		STORM SEWER PIPE-18 IN	57.00	LF		\$	
0970	00526		STORM SEWER PIPE-30 IN	153.00	LF		\$	
0980	01202		PIPE CULVERT HEADWALL-15 IN	2.00	EACH		\$	
0990	01310		REMOVE PIPE	88.00	LF		\$	
1000	01450		S & F BOX INLET-OUTLET-18 IN	3.00	EACH		\$	
1010	01452		S & F BOX INLET-OUTLET-30 IN	1.00	EACH		\$	
1020	01538		DROP BOX INLET TYPE 7	1.00	EACH		\$	
1030	01634		CAP CURB BOX INLET	11.00	EACH		\$	
1040	01650		JUNCTION BOX	5.00	EACH		\$	
1050	01726		SAFETY BOX INLET-18 IN SDB-1	1.00	EACH		\$	
1060	01767		MANHOLE TYPE C	1.00	EACH		\$	
1070	02607		FABRIC-GEOTEXTILE CLASS 2 FOR PIPE	450.00	SQYD	\$2.00	\$	\$900.00
1080	02625		REMOVE HEADWALL	19.00	EACH		\$	
1090	02690		SAFELOADING	34.00	CUYD		\$	
1100	08100		CONCRETE-CLASS A	6.75	CUYD		\$	

Section: 0004 - BRIDGE - OVER DRAKES CREEK MP 32.623 - DWG 16734

LINE	BID CODE	ALT	DESCRIPTION	QUANTITY	UNIT	UNIT PRIC	FP	AMOUNT
1112	23032EN		BRIDGE BARRIER RETROFIT (ADDED 6-8-23)	710.70	LF		\$	
1120	23378EC		CONCRETE SEALING (REVISED 6-8-23)	5,810.00	SQFT		\$	
1125	23550EC		REMOVE RAIL (ADDED 6-8-23)	710.70	LF		\$	

Section: 0005 - BRIDGE - NB OVER PLEASANT RUN MP 29.448 - DWG. 28769

LINE	BID CODE	ALT	DESCRIPTION	QUANTITY	UNIT	UNIT PRIC	FP	AMOUNT
1140	02231		STRUCTURE GRANULAR BACKFILL	375.00	CUYD		\$	

PROPOSAL BID ITEMS

231326

Page 4 of 5

Report Date 6/8/23

LINE	BID CODE	ALT	DESCRIPTION	QUANTITY	UNIT	UNIT PRIC	FP	AMOUNT
1150	02403		REMOVE CONCRETE MASONRY	71.30	CUYD		\$	
1160	03299		ARMORED EDGE FOR CONCRETE	32.00	LF		\$	
1170	08003		FOUNDATION PREPARATION DWG 28769 - NB EB9004 OVER DRAKES CREEK	1.00	LS		\$	
1175	08020		CRUSHED AGGREGATE SLOPE PROT (ADDED 6-8-23)	69.80	TON		\$	
1180	08033		TEST PILES (REVISED 6-8-23)	426.00	LF		\$	
1190	08046		PILES-STEEL HP12X53 (REVISED 6-8-23)	2,864.00	LF		\$	
1200	08100		CONCRETE-CLASS A (REVISED 6-8-23)	169.20	CUYD		\$	
1210	08104		CONCRETE-CLASS AA	156.80	CUYD		\$	
1220	08150		STEEL REINFORCEMENT	25,086.00	LB		\$	
1230	08151		STEEL REINFORCEMENT-EPOXY COATED (REVISED 6-8-23)	29,793.00	LB		\$	
1240	08633		PRECAST PC I BEAM TYPE 3 (REVISED 6-8-23)	541.30	LF		\$	
1250	23378EC		CONCRETE SEALING	12,382.00	SQFT		\$	
1260	25028ED		RAIL SYSTEM SINGLE SLOPE - 40 IN	275.00	LF		\$	

Section: 0006 - BRIDGE - SB OVER PLEASANT RUN MP 29.448 - DWG. 28769

LINE	BID CODE	ALT	DESCRIPTION	QUANTITY	UNIT	UNIT PRIC	FP	AMOUNT
1270	02231		STRUCTURE GRANULAR BACKFILL	375.00	CUYD		\$	
1280	02403		REMOVE CONCRETE MASONRY	71.30	CUYD		\$	
1290	03299		ARMORED EDGE FOR CONCRETE	32.00	LF		\$	
1300	08003		FOUNDATION PREPARATION DWG 28769 - SB EB9004 OVER DRAKES CREEK	1.00	LS		\$	
1305	08020		CRUSHED AGGREGATE SLOPE PROT (ADDED 6-8-23)	69.80	TON		\$	
1310	08033		TEST PILES (REVISED 6-8-23)	426.00	LF		\$	
1320	08046		PILES-STEEL HP12X53 (REVISED 6-8-23)	2,864.00	LF		\$	
1330	08100		CONCRETE-CLASS A (REVISED 6-8-23)	169.20	CUYD		\$	
1340	08104		CONCRETE-CLASS AA	156.80	CUYD		\$	
1350	08150		STEEL REINFORCEMENT	25,086.00	LB		\$	
1360	08151		STEEL REINFORCEMENT-EPOXY COATED (REVISED 6-8-23)	29,793.00	LB		\$	
1370	08633		PRECAST PC I BEAM TYPE 3 (REVISED 6-8-23)	541.30	LF		\$	
1380	23378EC		CONCRETE SEALING	12,382.00	SQFT		\$	
1390	25028ED		RAIL SYSTEM SINGLE SLOPE - 40 IN	275.00	LF		\$	

Section: 0007 - BRIDGE - US 41 RAMP OVER EB 9004 MP 29.568 - DWG NO. 16735

LINE	BID CODE	ALT	DESCRIPTION	QUANTITY	UNIT	UNIT PRIC	FP	AMOUNT
------	----------	-----	-------------	----------	------	-----------	----	--------

PROPOSAL BID ITEMS

231326

Page 5 of 5

Report Date 6/8/23

LINE	BID CODE	ALT	DESCRIPTION	QUANTITY	UNIT	UNIT PRIC	FP	AMOUNT
1400	02403		REMOVE CONCRETE MASONRY	12.50	CUYD		\$	
1410	23032EN		BRIDGE BARRIER RETROFIT	680.10	LF		\$	
1420	23378EC		CONCRETE SEALING	5,847.00	SQFT		\$	

Section: 0008 - LIGHTING

LINE	BID CODE	ALT	DESCRIPTION	QUANTITY	UNIT	UNIT PRIC	FP	AMOUNT
1430	04700		POLE 30 FT MTG HT	16.00	EACH		\$	
1440	04723		BRACKET 10 FT	16.00	EACH		\$	
1450	04740		POLE BASE	16.00	EACH		\$	
1460	04750		TRANSFORMER BASE	16.00	EACH		\$	
1470	04780		FUSED CONNECTOR KIT	32.00	EACH		\$	
1480	04795		CONDUIT-2 IN	150.00	LF		\$	
1490	04800		MARKER	1.00	EACH		\$	
1500	04811		ELECTRICAL JUNCTION BOX TYPE B	10.00	EACH		\$	
1510	04820		TRENCHING AND BACKFILLING	3,500.00	LF		\$	
1520	04821		OPEN CUT ROADWAY	120.00	LF		\$	
1530	04832		WIRE-NO. 12	1,950.00	LF		\$	
1540	04833		WIRE-NO. 8	7,200.00	LF		\$	
1550	04834		WIRE-NO. 6	2,200.00	LF		\$	
1560	04861		CABLE-NO. 6/3C DUCTED	1,600.00	LF		\$	
1570	04940		REMOVE LIGHTING	1.00	LS		\$	
1580	04942		REMOVE STORE & REINSTALL POLE	1.00	EACH		\$	
1590	23161EN		POLE BASE-HIGH MAST	8.00	CUYD		\$	
1600	24900EC		PVC CONDUIT-1 1/4 IN-SCHEDULE 80	3,200.00	LF		\$	

Section: 0009 - DEMOBILIZATION &/OR MOBILIZATION

LINE	BID CODE	ALT	DESCRIPTION	QUANTITY	UNIT	UNIT PRIC	FP	AMOUNT
1610	02568		MOBILIZATION	1.00	LS		\$	
1620	02569		DEMOBILIZATION	1.00	LS		\$	